

Canterbury Boys High School

2020



Student Welcome Book



Principal: Ross Dummett
www.canterburb-h.school@det.nsw.edu.au

CONTENTS

About us	3
Principal's Welcome	4
Help and how to get it.....	5-7
Curriculum.....	8
Uniform.....	9
Books and equipment/Homework	10
Bell times.....	11
Attendance procedures	12
Travel to school.....	13
Sport.....	14
School contributions	15-16
Wellbeing system.....	17-18
School map	19-21

ABOUT US

Canterbury Boys High School is a dynamic and highly successful NSW government high school situated in Sydney's inner west.

CBHS is a comprehensive high school for boys. The school endeavours to work in partnership with parents, students and the community to facilitate the academic, cultural, physical and social development of each student and in so doing encourage him to strive for excellence in all fields. The school has widely acclaimed welfare programs that nurture a positive learning climate, has a wealth of expertise in literacy and numeracy, specialising in strategies for boys' education.

Our achievements are evidenced by regular award recognition at local, state and national levels. This includes the school community receiving NSW Department of Education academic awards; staff receiving NSW Quality Teaching and Public Education awards; students receiving state and national leadership, VET, Pierre de Coubertin sporting awards and state sports and cultural awards. We have also been recognised for Art Express selection and state and national sport representation. The school has also received DoE Secretary Awards for Outstanding School Initiatives in STEM and In Residence Story Factory Partnership.

The school focuses on quality teaching and learning in a supportive environment that encourages boys to take responsibility for their own learning. Strong partnerships beyond the school provide a range of learning opportunities to ensure successful transition from school to university, further tertiary study or employment. We have specialised facilities and staffing personnel that meet the personalised needs of students. This includes a dedicated teaching and support staff and specialised positions such as our Student Support Officer and our Careers and Transition Advisors.

PRINCIPAL'S WELCOME

Welcome to Canterbury Boys High School

We are committed to providing the young men in the inner-west of Sydney with an outstanding and quality secondary education. We boast an impressive history of all-round excellence and have a culture of high expectations and achievement within an inclusive, caring and supportive environment.

Our focus is to recognise each boy as an individual and offer them opportunities to discover and explore their passions to reach their full potential. Learning alongside likeminded and talented peers, our boys enjoy a rich program of academics, sport, culture, leadership, wellbeing, civics and creative and performing arts where they develop the skills to be creative, innovative, enterprising and critical thinkers. These are the tools they will need to succeed in tomorrow's world.

Our curriculum is diverse and is built on a foundation of strong academic rigour, with extension subjects in HSC English and Mathematics and an innovative approach to teaching STEM (Science, Technology, Engineering and Mathematics). Our boys have the opportunity to study additional personalised curriculum in Years 9 and 10 to support their transition to HSC study. This can be in the arts, humanities, sport, language or technology. We implement the compressed curriculum model during Years 11 and 12, where students study the Preliminary and HSC subject content for three courses within one year and then an additional three in their final year. This innovative approach is supporting students' study habits and enabling a wider HSC curriculum choice. All subjects are taught by dedicated and expert teachers who are passionate about their curriculum and who specialise in meeting the specific learning of boys and young men.

We have strong ties with the University of Sydney, the University of NSW and the Australian Business and Community Network in addition to local providers in the Inner-West and Canterbury-Bankstown local government areas. These partnerships support the range of academic and co-curricular opportunities our boys experience that raise aspiration and achievement.

I encourage any current or prospective students and their families to come to the school to discuss how we can best meet your needs. I can arrange for school tours at any time to showcase the quality learning environment and first class facilities that define Canterbury Boys High School.

Principal

HELP AND HOW TO GET IT

THE PRINCIPAL

Mr R Dummett is the Principal. He leads and manages the school. He can help directly with advice on any of your concerns or refer you to the appropriate source of assistance.



DEPUTY PRINCIPALS

Ms C Dwyer and Ms M Webster assist the Principal to lead and manage the school and advise students and parents on curriculum and welfare matters.



HEAD TEACHERS

Teachers responsible for teaching and learning in the seven key learning areas (*English, Mathematics, Science, Human Society and its Environment, Technical and Applied Studies, Creative Arts and Personal Development, Health and Physical Education and Learning Support*). They also have whole-school responsibilities in the areas of literacy, wellbeing and attendance monitoring.

<p>Mr N McKinley English</p>	<p>Mrs N Simpson Mathematics</p>	<p>Ms H Shuhevych Science/PDHPE (Relieving)</p>	<p>Ms A Robson HSIE</p>
<p>Ms K Danilatos Creative Arts and TAS</p>	<p>Ms B Gray Support Unit</p>	<p>Ms N Melas Secondary Studies</p>	

YEAR ADVISERS

Year Advisers are appointed for each year group within the school. They are responsible for the general wellbeing of the students within their year. If parents/carers want to discuss matters of general overall progress, personal problems or issues involving a student's wellbeing, they are advised to contact the appropriate Year Adviser.

<p>Mr J Riordan Year 7</p>	<p>Mr L Miller Year 8</p>	<p>Ms N Melas Year 9</p>	<p>Ms H Shuhevych Year 10</p>	<p>Ms M Andriotellis Year 11</p>	<p>Mr A Dukes Year 12</p>

CLASS TEACHERS

As well as teaching particular subjects, teachers advise on students' academic progress, attitude to work and learning, and behaviour in class.

SUPPORT TEACHERS & SLSOs

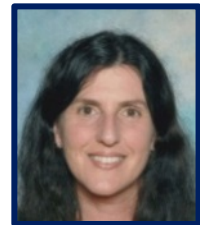
Work with students in the classroom and in small groups. They help students with their writing, reading and numeracy and may work individually or with small groups of students requiring extra assistance.

SCHOOL COUNSELLOR

On Mondays and Tuesdays the counsellor, Ms Scotten, is available to advise students and parents on a range of issues involving school and personal matters.

CAREERS ADVISER

Ms Giameos is trained to help students make the most suitable choice for training for a job or career. She organises work experience for students, and is available to talk to parents and students about qualifications needed for university, colleges, and other training centres.



TEACHER/LIBRARIAN

Manages the school library and helps staff and students with information skills and research work. Ms Cato is our Librarian.



ENGLISH AS AN ADDITIONAL LANGUAGE/DIALECT (EAL/D) TEACHER

The school has an EAL/D teacher, Ms Melas, to assist students from a language background other than English who may need extra help in writing or reading English in any subject.



STUDENT SUPPORT OFFICER

Student Support Officers (SSOs) support the implementation of the school's whole-of-school approach to wellbeing, helping students develop social and emotional skills through targeted strengths-based programs and strategies that build resilience, coping skills and positive relationships. The SSO at CBHS is Ms Goni.



THE ANTI RACISM CONTACT OFFICER

Ms Clark is the ARCO to whom students, or others acting on behalf of students, may bring concerns or complaints about discrimination, harassment or vilification. She will hear the concerns and assist the person/s to clarify options to address the concerns and pass a formal complaint to the Principal for action if necessary. Canterbury Boys High School expects responsible and respectful behaviour from all students at all times. If bullying, racism or gender based harassment occurs, students must seek help from a teacher or report the incident to a Head Teacher or Year Adviser for action and support.



SPORT COORDINATOR

See the Sport Coordinator, Mr Kapsimalis, to make your sport selections or for any sport related questions.



LEADERSHIP TEAM COORDINATOR

The Leadership Team Coordinator provides guidance, instruction, direction and leadership to the school leadership teams. This includes the Prefect Body and the Student Representative Council



SCHOOL ADMINISTRATIVE OFFICERS

Some non-teaching staff work in the front office. They issue bus passes, late notes, collect school fees, print lesson materials, and perform many other duties. Some staff also assist teachers in the Science laboratories and the Library.

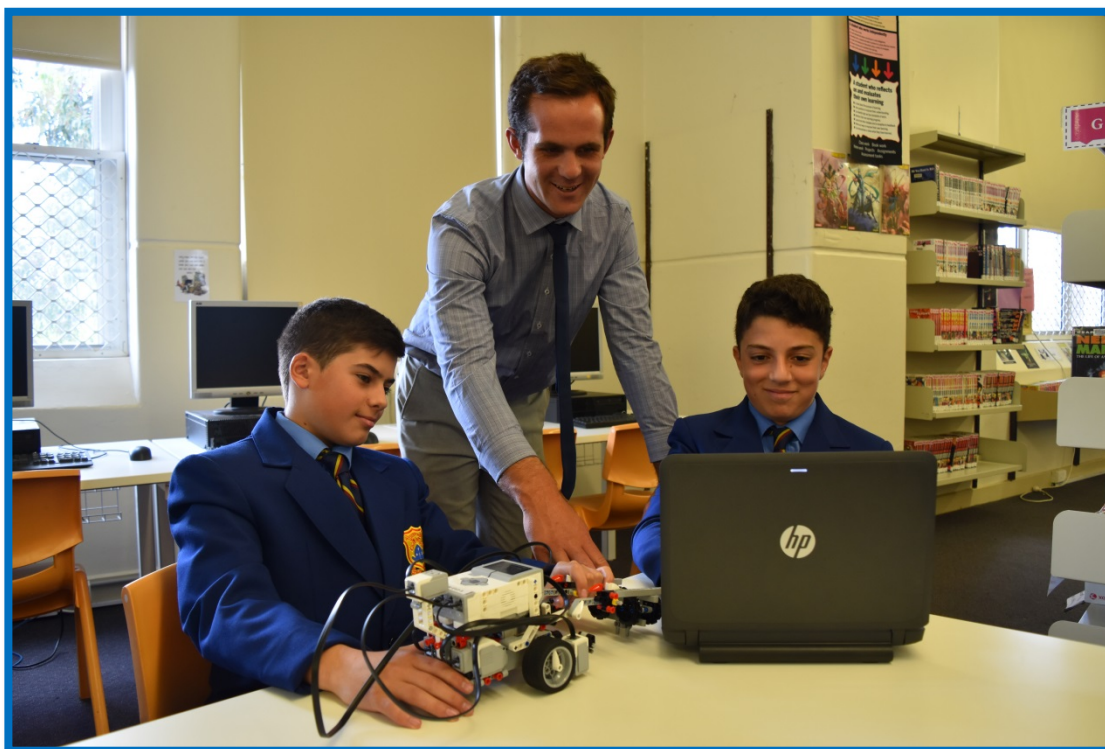
3 + 3 CURRICULUM MODEL

At CBHS we use a 3 + 3 curriculum model. With this model, College students (Years 11 and 12) study three subjects per year over two years, and complete both the Preliminary and Higher School Certificate (HSC) Courses for those three subjects in the one year. At the end of that year they sit the HSC examination for those subjects. These students study three subjects in College One and three subjects in College Two.

Year 10 students commence College One studies (including a change of uniform) in Week 6 of Term 4. All year groups move forward to their next year group on this day (eg Year 7 becomes Year 8 with a new timetable and new teachers).

We believe the benefits to students of this curriculum model include:

- Potentially greater subject choice to meet student learning needs;
- Improved retention – more students stay on and complete Year 12;
- Senior attendance improves;
- Students' stress limited by less subjects;
- College Two students are good role models for College One students in class, sharing their experience of the HSC;
- Students can make a more informed choice in College Two after seeing their HSC results.



SCHOOL UNIFORM

The wearing of a school uniform has been endorsed by CBHS P&C to promote pride and safety within the school and raise the profile of the school in the community. Students are to be dressed neatly in the school uniform listed below. The uniform is available for purchase from Lowes at Campsie. Ties, caps and football socks are available for purchase from the school office.

Junior Uniform (Years 7- 10)

Blue shirt with school crest on pocket
Grey shorts or trousers (*no tracksuit pants*)
Blue school crested sloppy joe or jacket
Grey or black socks
Black leather dress shoes
Junior school tie
School cap (*optional*)



Senior Uniform (Year 11 & 12)

White shirt with school crest on pocket
Grey shorts or trousers
Grey or black socks
Black leather dress shoes
Senior school tie
Blue school crested sloppy joe, jacket or blazer



Sport/PE Uniform

Blue sport shorts with school logo
Sports polo shirt with school logo
School football socks (*only for grade teams and available for purchase from the school*) or white sports socks.

Footwear for TAS, Science and Practical Visual Arts Classes



The Department of Education has specified the type of footwear for these classes. It states: **'Shoes with stout sole and firm uppers are considered necessary to protect students and staff'**. Under no circumstances will students be allowed to do practical work in any class when not wearing the approved footwear.

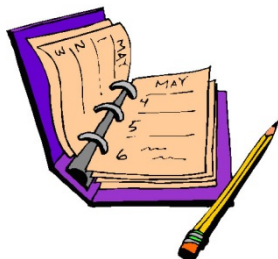
Representing the School

When representing the school at excursions, sport, SRC forums and other events outside the school, full school uniform must be worn.

Out of School Uniform

If for unforeseen circumstances a student is out of uniform he should bring a note stating the student's name, class, year and the reason. Continual failure to wear school uniform without an acceptable explanation, could lead to suspension for continued disobedience for not following school procedures.

BOOKS & EQUIPMENT



A school diary and personal timetable will be issued to students on enrolment. Textbooks will be provided by the school, sometimes in electronic format. (*In Years 11 and 12 the textbook hire fee must be paid before collecting textbooks, otherwise students can purchase their own*). Students will be guided by their subject teachers as to the equipment they require.



HOMEWORK

Homework is always an important part of school life. All subjects set homework on an “as needs” basis. Students must write down all their homework requirements in their diary. The homework diaries will be monitored by teachers, Head Teachers and the Year Adviser. This helps to establish good study practices and organizational skills that are so important to a student's school success.

Types of Homework:

- Practice exercise: reading, mathematics problems, sketching.
- Preparatory homework: title page, researching a topic, reading from the textbook.
- Extension assignments: essay writing.
- Lessons of the day should be summarised, reinforcing information learnt that day, and improving writing skills.

Recording Homework:

The school diary should be kept out on the desk in every lesson to record homework assessment tasks and when they are due.

Guidelines and Helpful Hints:

- Homework should be done on the day given rather than left to the last minute the night before it is due.
- Assessment tasks need to be worked on over the full period of time.
- Discuss homework and what was learnt in class that day.
- Make sure the following is suitable: a well-lit area to work in; a suitable table to work on; and food and drink.
- Turn off electronic and gaming devices or other distractions.
- Restrict hour of use of above technologies.

Please feel free to communicate any concerns regarding homework: call 9798 8444 and ask for the Year Adviser or Head Teacher of the subject concerned.

Library Hours:

Monday to Friday - 8.30 am to 3.15 pm.

Homework Centre Hours:

Monday 3.30 – 4.45pm and Thursday 3.30 – 4.45pm



BELL TIMES

The school day **begins** at **8.40am**. School finishes at **3.15pm** on Monday, Thursday and Friday. On Tuesday school finishes at **2.35pm**. On Wednesday students attend **Sport** during Period 4 and finish at **2.35pm**.

The normal school day is divided into four periods of between 73 to 79 minutes (depending on the day). Period 1 starts at 8:40 am. If you are late to school you will need to report to the front office and receive a late note.

There are two recesses, one at the end of Period 1 and one at the end of Period 2. Lunch follows Period 3. After Period 4 students go home.

	MONDAY	TUESDAY	WEDNESDAY	THURSDAY	FRIDAY
Warning Bell	8.35	8.35	8.35	8.35	8.35
Period 1	8.40 – 9.59	8.40 – 9.53	8.40 – 9.50	8.40 – 10.01	8.40-10.01
Recess 1	9.59 – 10.14	9.53 – 10.08	9.50 – 10.03	10.01 – 10.17	10.01 – 10.21
Assembly *	10.14 – 10.29				
Period 2	10.29 – 11.48	10.08 – 11.21	10.03 – 11.13	10.17 – 11.38	10.21 – 11.42
Recess 2	11.48 – 12.03	11.21 – 11.36	11.13 – 11.26	11.38 – 11.54	11.42 – 11.57
Period 3	12.03 – 1.22	11.36 – 12.49	11.26 – 12.06	11.54 – 1.15	11.57 – 1.18
Lunch 1	1.22 – 1.39	12.49 – 1.05	12.06 – 12.28	1.15 – 1.35	1.18 – 1.36
Lunch 2	1.39 – 1.53	1.05 – 1.20	12.28 – 12.47	1.35 – 1.51	1.36 – 1.51
Warning bell	1.53 – 1.56	1.20 -1.22	12.47 - 12.50	1.51 - 1.54	1.51 - 1.54
Period 4	1.56 – 3.15	1.22 – 2.35	12.50 – 2.35	1.54 – 3.15	1.54 – 3.15
Staff/Faculty Meetings		2.35 – 3.15			

*** Wet Weather Monday – NO Assembly (bell times will be same as Thursdays)**

ASSEMBLIES

On Monday the school meets together for an assembly after Recess 1. Students assemble in Year Groups. Awards for excellence in a subject, sport and other events are presented. Often a guest speaker from outside the school will speak briefly on some topic of interest to the students.

ATTENDING EXCURSIONS/REPRESENTING THE SCHOOL

Students will not be permitted to attend school excursions or represent the school in any manner (e.g. sport, band) if they:

- Are on a Head Teacher plan;
- Have two or more outstanding Warning Letters;
- Are on a monitoring card following return from suspension.

ATTENDANCE PROCEDURES

ABSENCE FROM SCHOOL

Students should only be absent from school for reasons such as illness or unforeseen circumstances. You will be alerted if a student is absent via a text message after 10am. You may text a response. If a student has been absent, a parent/guardian must send a signed note giving a reason for the absence (example below). This note can be written in English or your first language. The student should hand the note in at the school office.

Date:
Please excuse of Year
for being absent on (day & date).....
Reason for being away:
Parent/Guardian Signature:

LATENESS

All students must report to the school office if they are late. Students should bring a note giving a reason for their lateness, signed by a parent or guardian.

LEAVING SCHOOL DURING THE DAY

If students have to leave school during the day for an appointment or other reason they should bring a note from the parent or guardian (see example below) and place it in the box outside the Deputy Principal's office before school starts at 8:40am. The DP may ring to confirm the details in some instances. Students must pick up their early leavers pass from the office during the next break. Students must present their leavers pass to the teacher to be excused from class at the time of leaving. Students must carry the pass with them on the street as law enforcement officers can return students to school if they do not have it with them.

Date:
Please allow of Year
to leave school at (time and date).....
Reason for leave:
Parent/Guardian Signature:

Sport is a compulsory requirement of study and not a time for making appointments or attending to other matters. However, if early leaving cannot be avoided on a sports day permission will only be granted if a phone call is received by the school before 12.00 noon confirming the request.

TRAVEL TO SCHOOL

ELIGIBILITY

All students who live more than 2.0 kilometres in a direct line from the school or who have to walk more than 2.0 kilometres by the closest route, are entitled to free travel between home and school using the services nominated in their application. Eligibility for free School Opal Cards can be checked, new applications made or current cards updated online at transportnsw.info/school-students. Students who are ineligible can appeal to the Ministry of Transport on medical (must provide a doctors certificate) or safety grounds or purchase a Youth Opal Card. There is a fee required to replace lost or stolen School Opal Cards. Cards will be reissued free if damaged by ticket machines. Cards will not be reissued if damaged intentionally by the student.

CONDUCT

Students should travel directly to and from school in a safe manner. Free bus and train travel is a privilege. Be polite and respectful at all times when traveling to and from school. You must give your seat to a paying passenger graciously and not wait to be asked. Opal cards may be confiscated by bus drivers or railway staff if students do not follow the guidelines issued by the Department of Transport.

ROUTES AND TIMETABLES

NSW Transport provides a search function on their website transportnsw.info for bus and train timetables and route maps. When using the Trip Planner on the site, remember to tick on the *School Bus* option from the *Refine* section to see school specials, as this option is not a default option. Alternatively, you can phone 131500 or download a NSW Transport app <https://transportnsw.info/apps>.

The nearest railway station is Canterbury Station. Students can walk a short distance along Canterbury Road to Minter Street, turn left into Minter Street, pass Canterbury Public School and Canterbury Girls High, and through the roundabout to Canterbury Boys High. Alternatively students can catch a school special bus connecting the station to the school (for example, 632s bus at 8:10am).

LOST PROPERTY

- Sydney Trains – Phone: 9379 3341 Collect from Central Station 8am - 4pm Mon - Fri.
- Transit Systems (Inner West buses) - Phone: 8118 7101 Collect from Leichhardt Depot, 230-240 Balmain Road, Leichhardt.
- Punchbowl Bus Company – Phone: 8522 5000 8am - 5pm Mon - Fri.
- Transdev NSW (Bankstown Network) – Phone 8700 0555 8am -5pm Mon - Fri

You can also log a lost property inquiry online at the NSW Transport website (click on the *Help and Contact* tab, choose a service and click on the *submit lost property query* link).

CONCESSION CARDS

Students aged 16 years and over will be issued with a NSW Senior Secondary Student Concession Card at the beginning of each year, to allow them to have concession fares while they remain enrolled in a NSW secondary school. Children aged between 4 and 15 years do not require proof for concession travel on the NSW Transport Network. However, if students under 16 years of age look more mature, they can ask their school to provide them with a Proof of Age card as proof of eligibility for concession/child fares.

SPORT

Sport is held every Wednesday afternoon from 12.50 pm to 2.35 pm for students in Years 7-10. Sport for Year 11 students is optional providing students are participating in some form of sport outside of school. The following grade sports are available to students:

SUMMER

Grade Basketball
Grade Cricket
Grade Baseball
Grade Volleyball
Grade Touch Football
Grade Table Tennis
Grade Mini-Soccer

WINTER

Grade Rugby League
Grade Soccer
Grade Tennis
Grade Table Tennis
Grade Softball



Also available are a wide range of recreational sports and activities including:



Swimming Ice Skating
School Sports Table Tennis

Some of these sports require the student to pay entry costs at the venue each week (eg swimming and ice skating).

Boys will be able to participate in Grade Sport. Grade Sport involves competition between eleven of the thirteen boys and co-educational schools which make up the St George Zone. Grade Sport involves travel on buses to other venues for 'away' matches and travelling with coaches to local venues for 'home' matches. The cost of sport is to be met by the student. This amounts to \$50 per season (two terms) and includes the hiring of grounds, buses and referees, and the provision of uniforms and equipment.

Only students who follow the school rules, display good sportsmanship, pay the grade sport fees and have a high level of attendance will be permitted to participate in Grade Sport. Students who do not participate in Grade Sport will participate in recreational sports.

Sport uniforms are only available from the school. Sport uniform is to be worn during all PDHPE lessons and during sport on Wednesdays. It is not an alternative to the school uniform and may not be worn as such, with the exception of Wednesdays. Sport shoes suitable for specific sports (e.g. soccer boots), are to be purchased independently.

During the year all students must also attend our annual athletics, swimming and cross country carnivals. From these, students may be selected to represent the school at district, regional or state carnivals.

An intensive swimming, lifesaving and CPR course is also a compulsory activity for Year 7, held in Term 4.

SCHOOL CONTRIBUTIONS – JUNIOR SCHOOL

Years 7-10

The school's finance committee have determined the following schedule. The amounts requested by the school are listed below:

VOLUNTARY GENERAL CONTRIBUTION OF \$90.00:

This money is used to purchase technology, library resources and any other reference texts that will enhance your son's education. These additional educational opportunities can only be achieved through your voluntary contribution.

SPORT:

Students who select grade sport must pay \$30 per term to cover costs of buses, grounds and jerseys. School sport incurs no fee. Off site, non-grade sport (eg swimming, ice-skating, tennis) require payment of a weekly entrance fee payable to the sporting organisation.

SUBJECT FEES:

While many subjects offered at the school do not involve any extra cost to students, some subjects do require students to cover the cost of additional equipment and consumables. These subjects and the amounts appear below:

Years 7 & 8	MATHEMATICS ONLINE SOFTWARE	\$10
	MUSIC	\$25
	TECHNOLOGY	\$40
	VISUAL ARTS	\$25
Years 9 & 10	MATHEMATICS ONLINE SOFTWARE	\$10
	<i>Pay only for chosen electives from list below:</i>	
	CONSTRUCTION VET	\$50 +
	WHITE CARD FOR CONSTRUCTION	\$35
	FOOD TECHNOLOGY	\$80
	FUTURE ENTREPRENEURS	\$10
	INDUSTRIAL TECHNOLOGY: ELECTRONICS	\$40
	INDUSTRIAL TECHNOLOGY: ENGINEERING	\$40+
	INFORMATION & SOFTWARE TECHNOLOGY	\$30
	KITCHEN CHEMISTRY	\$50
	MUSIC	\$50
	PHOTOGRAPHIC & DIGITAL MEDIA	\$40
PHYSICAL ACTIVITY & SPORT STUDIES	\$25	
VISUAL ARTS	\$50	

NB: + indicates that additional fees may have to be paid depending on projects made.

SCHOOL CONTRIBUTIONS – SENIOR SCHOOL

Years 11 & 12

The school's finance committee have determined the following schedule. The amounts requested by the school are of three types:

TEXT BOOK LEVY:

Senior students in Years 11 and 12 can pay \$50 per year for the hire of school owned textbooks. If families choose not to pay the \$50, the school will assume that you have decided to purchase your own textbooks and school owned textbooks will not be issued.

SPORT CONTRIBUTIONS:

Sport is not compulsory for College students. Students selecting grade sport must pay \$30 per term to cover costs of buses, grounds and jerseys.

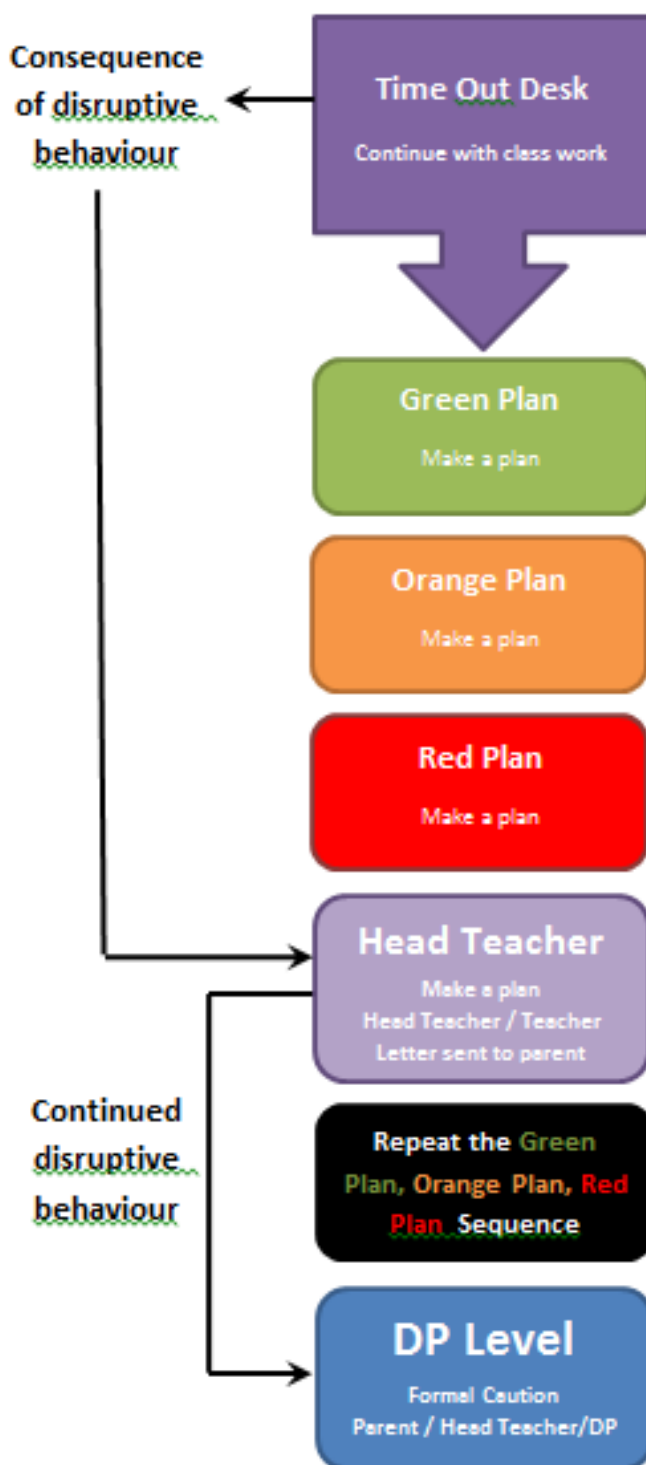
SUBJECT FEES:

Some subjects require students to cover the cost of additional equipment and consumables. These subjects and the amounts appear below. **Students pay only for the subjects that they have chosen for the year.**

FOOD TECHNOLOGY	\$100.00
INFORMATION AND DIGITAL TECHNOLOGY VET	\$30.00
INFORMATION PROCESSES AND TECHNOLOGY	\$25.00
MUSIC 1	\$100.00

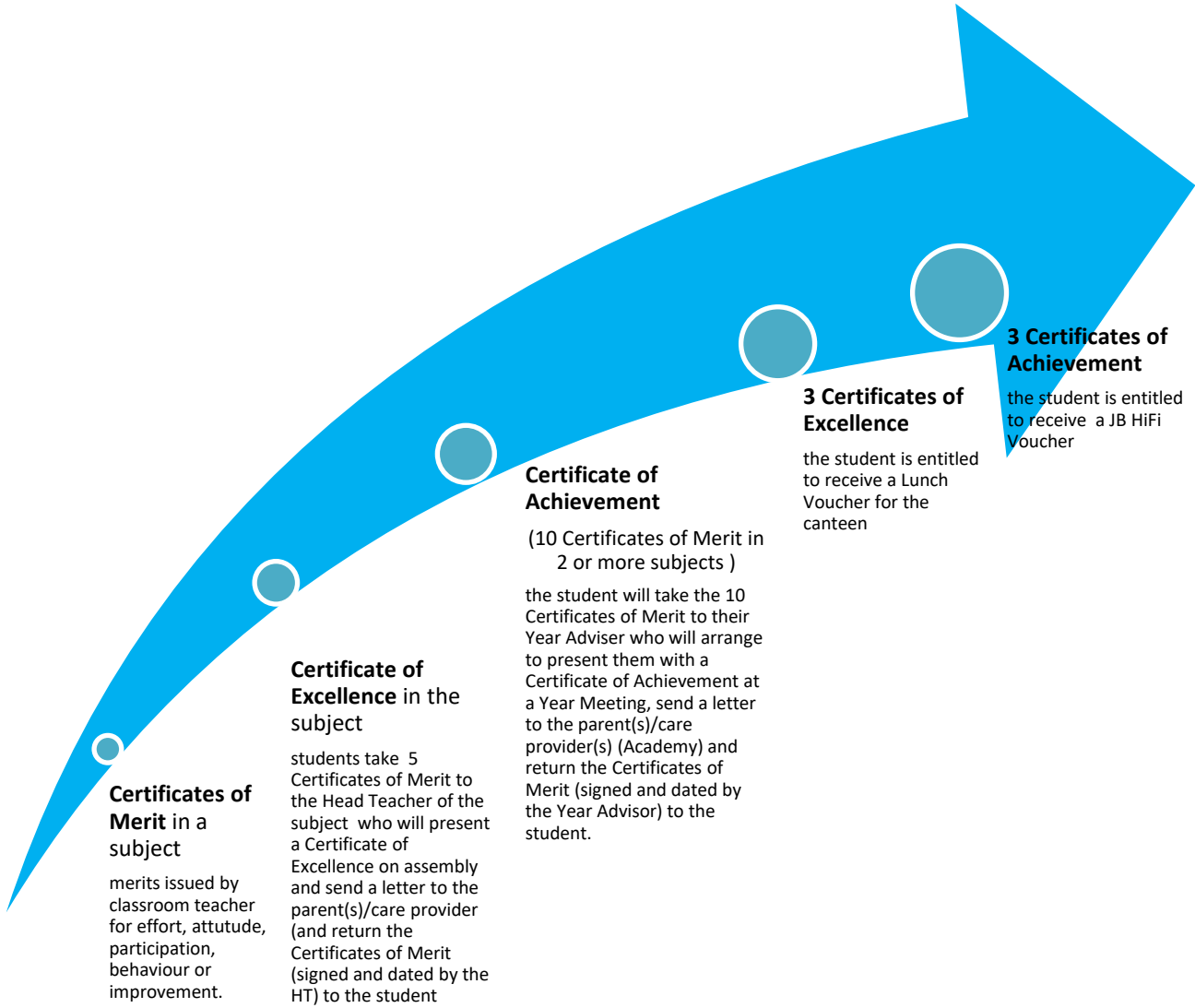
Remember, if you are in receipt of Youth Allowance, this money is to be used to cover expenses (uniform, contributions and excursions) in Years 11 and 12.

Wellbeing System Overview



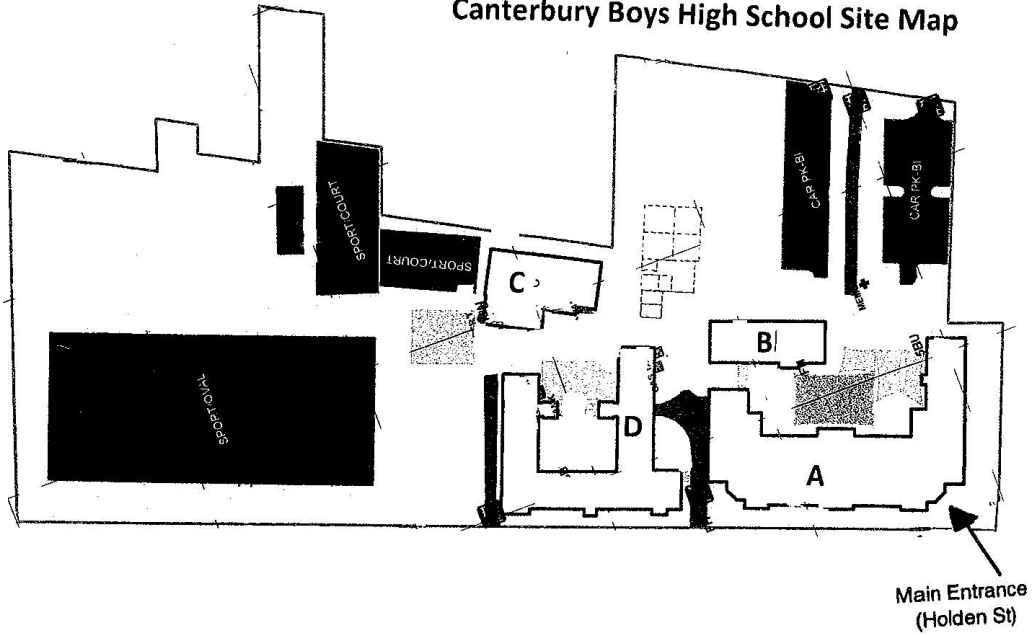
At each stage of the process the student starts fresh at learning once the plan has been resolved.

Merit Certificates

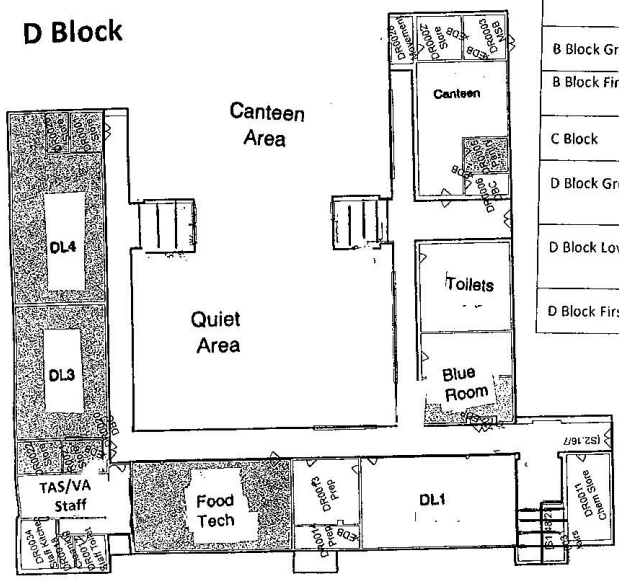


SCHOOL MAP.

Canterbury Boys High School Site Map

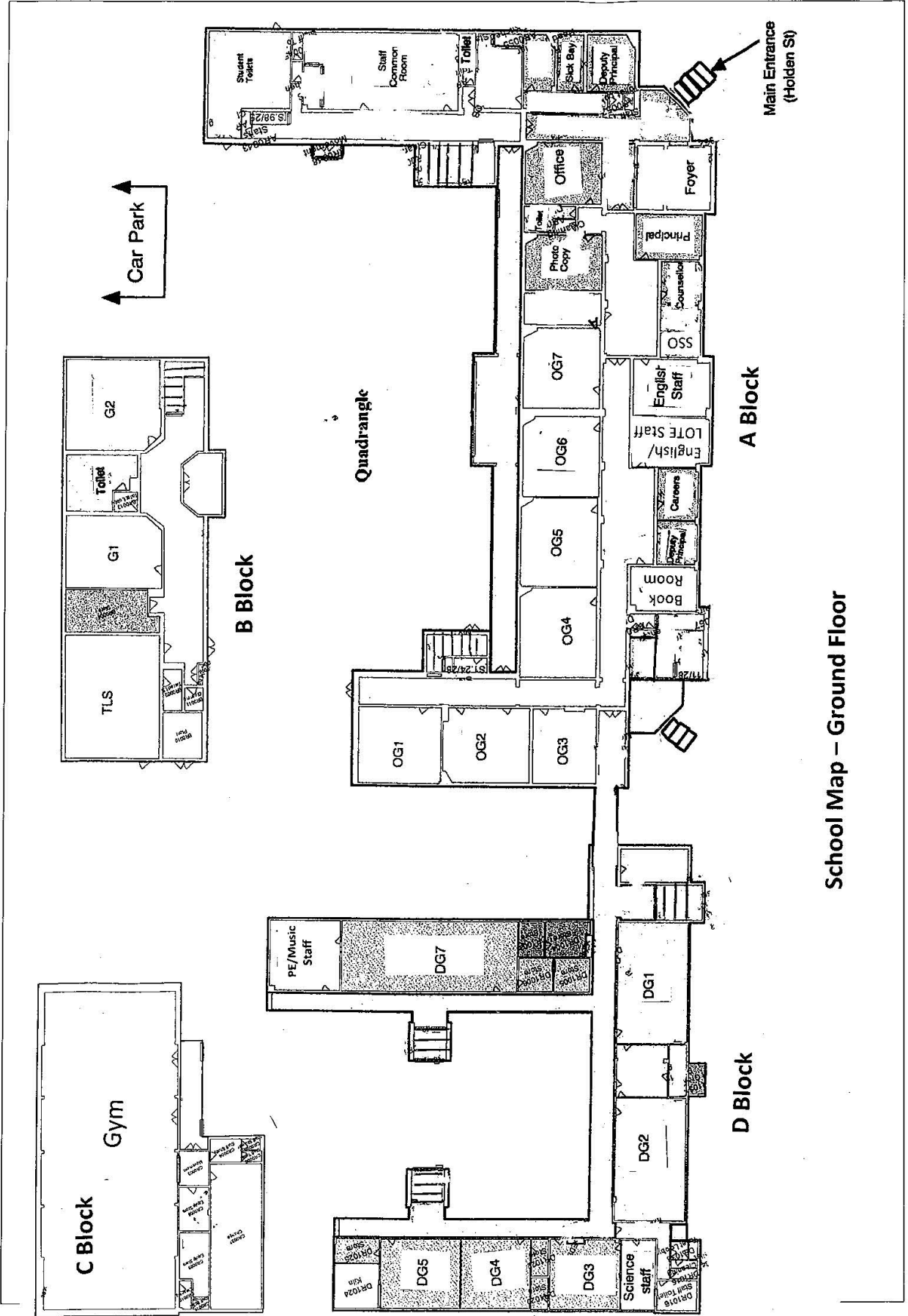


School Map - Lower Ground Floor



LEGEND:

A Block Ground Floor	Administration, Principal, Deputy Principals, Counsellor, Careers Adviser, Student Support Officer, English/LOTE Staffroom and classrooms
A Block First Floor	Library, Mathematics Staffroom and classrooms, Technology Office and Computer Rooms
B Block Ground Floor	TLS, HSIE classrooms
B Block First Floor	HSIE Staffroom, Head Teacher's Office and classrooms
C Block	Gymnasium
D Block Ground Floor	Science Staffroom and laboratories, PDHPE/Music Staffroom, Visual Arts classrooms
D Block Lower Ground	TAS/VA Staffroom, Food Technology Kitchen, Science laboratory, Industrial Technology classrooms
D Block First Floor	Learning Support Staffroom, PDHPE and Music classrooms, Science laboratories



School Map – Ground Floor

School Map – First Floor

