



Canterbury Boys High School

220-252 Holden Street, CANTERBURY NSW 2193

☎: 02 9798 8444

✉: canterburb-h.school@det.nsw.edu.au

🌐: www.canterburb-h.schools.nsw.edu.au

Welcome to Canterbury Boys High School



Students and Parents



Contents

ABOUT US.....	3
SUPPORT AND GUIDANCE	4
LEARNING HABITS	8
MERIT AWARD PROGRAM.....	9
MOBILE PHONES – OFF AND AWAY ALL DAY	10
CLASSROOM RULES.....	11
PLAYGROUND RULES.....	11
WELLBEING SYSTEM OVERVIEW	12
SCHOOL UNIFORM.....	13
SCHOOL UNIFORM - SCHOOL SHOES	14
SPORTS UNIFORM	14
SCHOOL CONTRIBUTIONS	16
SPORT.....	17
SPORT HOUSES.....	18
SWIMMING CARNIVAL	19
ATHLETICS CARNIVAL	20
SCHOOL PHOTO DAY.....	21
SCHOOL CLUBS.....	22
MUSIC PROGRAMS.....	23
BREAKFAST CLUB	24
HOMEWORK AND DEVELOPING A REGULAR STUDY ROUTINE	25
HOMEWORK CENTRE.....	25
BELL TIMES	26
NAPLAN	27
MEET THE TEACHER	27
NSW SCHOOL IMMUNISATION PROGRAM	28
ATTENDANCE PROCEDURES.....	29
TRAVEL TO SCHOOL	31
SENTRAL PARENT PORTAL.....	32
SCHOOL MAPS.....	33



ABOUT US

Canterbury Boys High School is a dynamic and highly successful NSW government high school situated in Sydney's inner west.

Canterbury Boys High School is committed to excellence in boys' education. High quality educational opportunities, with a strong focus on enrichment and differentiation, maximises our students' potential. Forging authentic relationships across our community and embedding our core values of truth and honour develops young men of integrity.

Our staff are committed to excellence in boys' education centred on evidence-based teaching practice. We provide a high quality and well rounded education that develops leadership and encourages students to take responsibility for their own learning. Our school has a culture of high expectations that values commitment to learning.

Strong partnerships beyond the school provide a range of learning opportunities to ensure successful transition from school to university, further tertiary study or employment. We have specialised facilities and staffing personnel that meet the personalised needs of students.





SUPPORT AND GUIDANCE

THE PRINCIPAL

Mr R Dummett is the principal who leads and manages the school. He can help directly with advice on any of your concerns or refer you to the appropriate source of assistance.



Mr R Dummett

DEPUTY PRINCIPALS

Ms C Dwyer (Years 8, 10 and 12) and Ms M Webster (Years 7, 9 and 11) assist the principal to lead and manage the school and advise students and parents on curriculum and welfare matters.



Ms C Dwyer



Ms M Webster

HEAD TEACHERS

Head teachers are responsible for teaching and learning in the seven key learning areas (*English, Mathematics, Science, Human Society and its Environment, Technical and Applied Studies, Creative Arts and Personal Development, Health and Physical Education and Learning Support*). They also have whole-school responsibilities in the areas of literacy, numeracy, wellbeing, and attendance monitoring.



Mr N McKinley
English



Ms J Ambele
Mathematics



Ms H Shuhevych
Science and
PDHPE



Ms A Robson
HSIE



Ms N Clark
Creative Arts
and TAS



Ms B Gray
Support Unit
and Learning
Support



Ms T Cassar
Administration



YEAR ADVISERS

Year Advisers are appointed for each year group within the school. They are responsible for the general wellbeing of the students within their year. If parents/carers want to discuss matters of general overall progress, personal problems or issues involving a student's wellbeing, they are advised to contact the appropriate Year Adviser.



Mr S Kendrick
Year 7



Ms A Simpson
Year 8



Mr M Papadakis
Year 9



Mr M Wong
Year 10



Mr J Riordan
Year 11



Ms S Ali
Year 12

CLASS TEACHERS

As well as teaching particular subjects, teachers advise on students' academic progress, attitude to work and learning, and behaviour in class.

SUPPORT TEACHERS & SLSOs

Work with students in the classroom and in small groups and help students with their writing, reading and numeracy. They may work one on one or with small groups of students requiring extra assistance.

SCHOOL COUNSELLOR

The school counsellors, Mr D Creighton, Ms C Drake and Mr N Davis, are available to advise students and parents on a range of issues involving school and personal matters.

TEACHER/LIBRARIAN

Manages the school library and assists staff and students with information and research skills.

ENGLISH AS AN ADDITIONAL LANGUAGE/DIALECT (EAL/D) TEACHER

The school has an EAL/D teacher, to assist students from a language background other than English who may need extra help in writing or reading English in any subject.



CAREER AND TRANSITION ADVISERS

Our careers and transition advisers are trained to help students make suitable choices in preparation for a job or career. They organise work experience for students and are available to talk to parents and students about qualifications needed for university, colleges, and other training centres. Our Careers Adviser is Ms Giameos, and our Transition Adviser is Ms Bursill.



Ms A Giameos



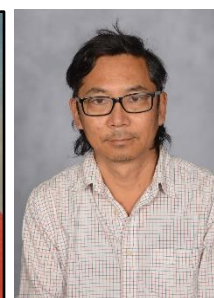
Ms P Bursill

STUDENT SUPPORT OFFICERS

Student Support Officers (SSOs) support the implementation of whole school approach to wellbeing, helping students develop social and emotional skills through targeted strengths-based programs and strategies that build resilience, coping skills and positive relationships. The SSO's at CBHS are Ms Goni and Mr Maeda.



Ms S Goni



Mr K Maeda

THE ANTI RACISM CONTACT OFFICER

Ms Clark is the ARCO to whom students, or others acting on behalf of students, may bring concerns or complaints about discrimination, harassment or vilification. Ms Clark will hear the concerns and assist the person/s to clarify options to address the concerns and pass a formal complaint to the principal for action if necessary.



Ms Clark

SPORT COORDINATORS

The sport coordinators manage whole school sport and its organisation. If you have any issues regarding sport, you can see Mr Kapsimalis or Mr Wong.



Mr H Kapsimalis



Mr M Wong



LEADERSHIP TEAM AND STUDENT REPRESENTATIVE COUNCIL COORDINATORS

The Leadership Team and SRC coordinators provide guidance, instruction, direction and leadership to the school leadership teams. This includes the Prefect Body and the Student Representative Council. The leadership coordinator is Ms Stamos and the SRC coordinator is Mr Dukes.



Ms C Stamos



Mr A Dukes

ENRICHMENT PROGRAM COORDINATORS

Canterbury Boys High School offers an Enrichment Program for boys who exhibit high potential across a range of learning domains. The enrichment coordinator works closely with the class teachers to coordinate a cross KLA approach to enrichment. The enrichment coordinators are Mr Smith and Ms Simpson.



Mr G Smith



Ms A Simpson

ADMINISTRATIVE AND SUPPORT STAFF

Administrative staff perform many duties in the front office including issuing late notes, processing payments, collecting and processing absence notes and printing lesson materials.

Support staff assist teachers in classrooms, science laboratories, the kitchen and the library.



LEARNING HABITS

A student who is well prepared and organised:

- comes to class on time
- brings all necessary equipment to class, eg. PE gear, books, pens, and diary
- is ready to start at the beginning of each lesson
- records homework, assessments and important dates
- wears correct uniform every day
- brings all notes on time, eg. late, absent, excursion.

A student who shows initiative and responsibility for their own learning:

- asks questions and contributes to class discussions
- keeps up to date (class work, homework and assessments) by asking teacher for missed work after an absence
- is aware of upcoming tasks and events, eg. assignments
- manages time to ensure all work and homework is complete and on time
- prepares for exams and assessment tasks
- seeks assistance and advice from teachers, including the careers adviser, to be aware of career choices and course requirements
- keeps mobile phone out of sight and on silent
- looks after all school resources.

A student who works cooperatively in group situations:

- is clear on the group task and its outcomes
- is clear on their assigned role
- shares group resources and equipment responsibly
- contributes by making suggestions and offering ideas
- encourages all members of the group to be involved
- listens to and respects the points of view of other people
- works cooperatively with the group to help complete the task.

A student who works independently:

- stays on task
- is self-motivated and shows commitment to meet obligations
- identifies what is required and seeks to achieve it in a time-effective manner
- finds solutions for themselves using a variety of strategies
- strives to improve and consolidate their learning
- drafts, proofreads and edits work for improvement.

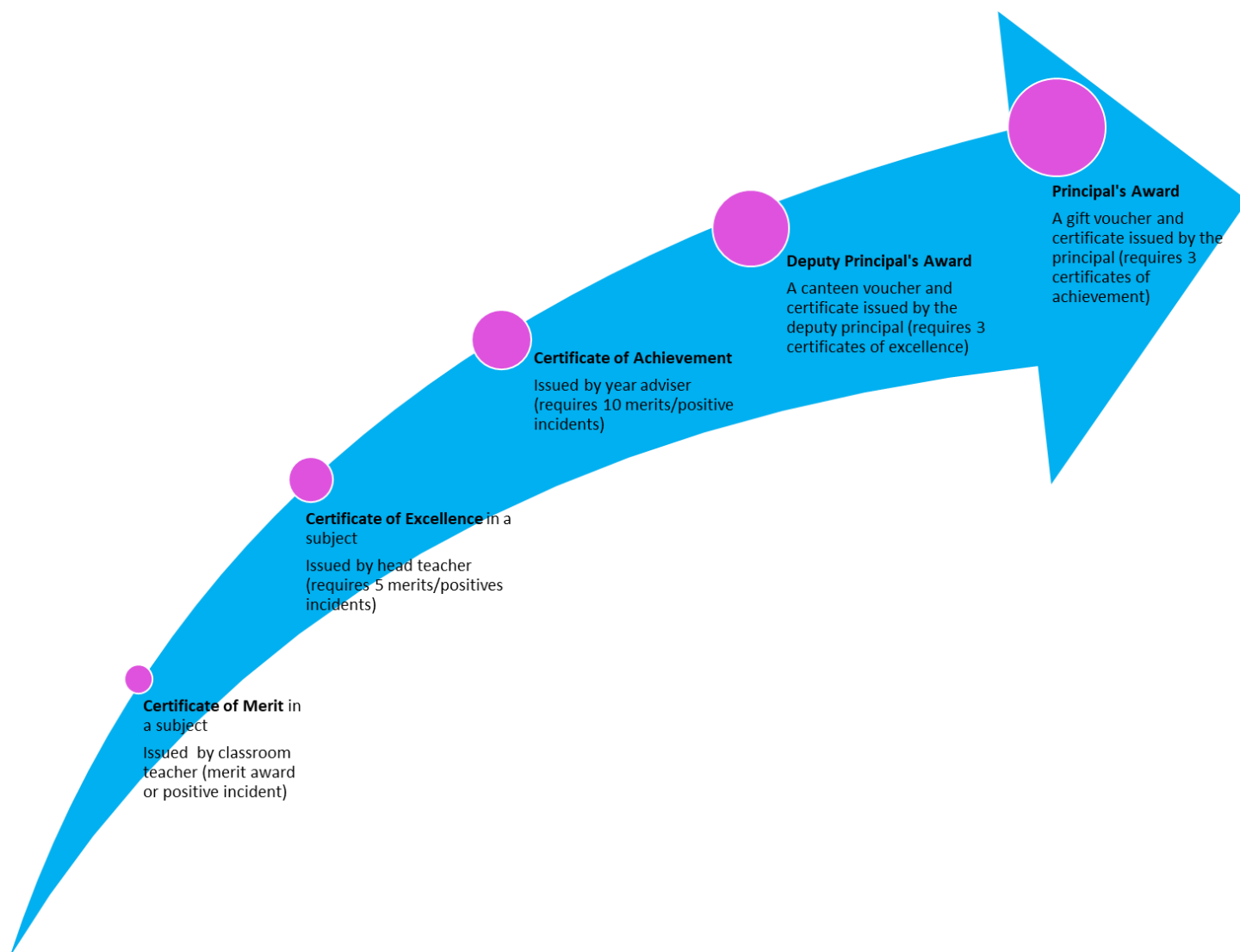
A student who reflects on and evaluates their own learning:

- is clear about the purpose of learning
- asks questions to improve their understanding
- can identify high and low standards of work
- monitors their own learning progress
- learns from their mistakes and is receptive to feedback
- works out ways to improve their own learning
- can demonstrate what they have learned.



MERIT AWARD PROGRAM

Positive behaviour is rewarded with Merit certificates. You can work your way through the Merit Award Program by collecting Merit Certificates from your teachers and achieve a Principal's Award.





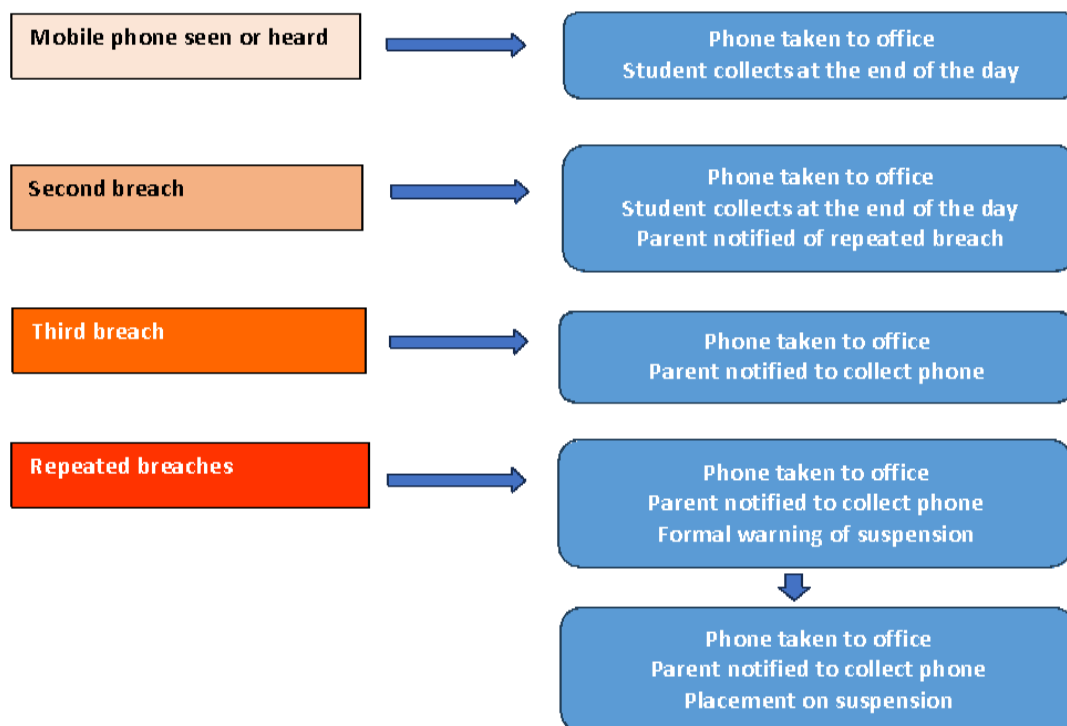
MOBILE PHONES – OFF AND AWAY ALL DAY

Canterbury Boys High School supports the restrictions of mobile phones in accordance with the NSW Department of Education: Student Use of Mobile Phones in Schools policy. Mobile phone use in schools can impact student learning and wellbeing. Restricting mobile phone use at school aims to increase focus in classrooms, remove distractions and promote positive social interaction, while reducing the potential for online bullying. Canterbury Boys High School has strong teaching and learning practices to support students in the classroom using various forms of appropriate technology, which maximises the benefits and minimises the risks of digital environments and prepares students for life beyond school. We foster a safe learning environment which supports and enhances each child's social and emotional health through our wellbeing and learning support teams.

The Canterbury Boys High School community has elected to use the following approach: **All mobile phones will be 'off and away' for the full school day, including recess and lunch, and all school-related activities.** To purchase items from the canteen, cash or card is required. In some limited circumstances, use may be approved by a teacher or principal for an educational purpose only.

Should a student need to contact a parent or carer during the school day, they must approach the administration office and ask for permission to use the school's phone. During school hours, parents and carers are expected to only contact their children via the school office.

Consequences of Breaches





CLASSROOM RULES

Be an effective learner by:

- being on time for class
- being well prepared and organised
- listening to and following the teacher's instructions
- focusing on learning
- being respectful to others
- looking after the school's and other people's property
- keeping mobile phones out of sight and on silent.

PLAYGROUND RULES

Be safe and respect the rights of others to be safe

- Choose safe activities
- 'Hands off' others
- Violence of any kind is unacceptable, including 'mucking around' and throwing objects at others. Smoking/vaping is prohibited.
- Play touch football on the oval ONLY with teacher supervision

Move around the school sensibly and safely

- Walk when inside buildings
- Play in supervised areas within the school grounds
- Eat and drink in the playground, not in buildings
- Move to class promptly when the bell rings

Speak and act respectfully towards students and staff

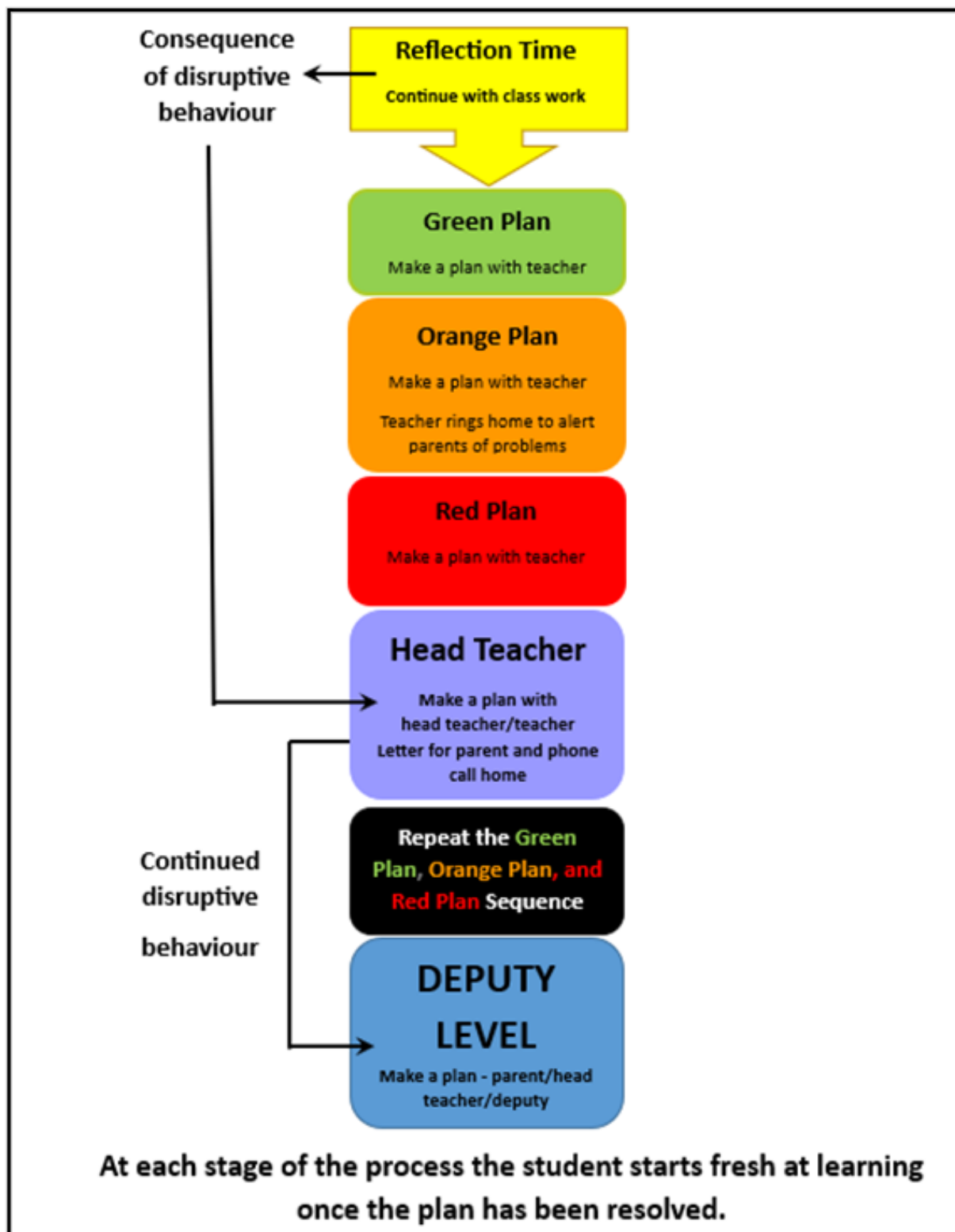
- Use appropriate language at all times
- Follow staff instructions immediately

Keep our school clean and tidy

- Place rubbish in bins



WELLBEING SYSTEM OVERVIEW





SCHOOL UNIFORM

Canterbury Boys' High School students take pride in their school and sports uniforms.

Remember to clearly label all uniform items with your name.

All items are available at **LOWES Campsie**.



The correct school uniform is:

Junior Uniform (Years 7 - 10)

- Blue shirt with school crest on pocket
- Grey shorts or trousers (no tracksuit pants)
- Blue school crested sloppy joe or jacket
- Grey or black socks
- Black leather dress shoes
- Junior school tie
- School cap (optional)
-



Senior Uniform (Year 11 & 12)

- White shirt with school crest on pocket
- Grey shorts or trousers
- Grey or black socks
- Black leather dress shoes
- Senior school tie
- Blue school crested sloppy joe, jacket or blazer



SCHOOL UNIFORM - SCHOOL SHOES



SPORTS UNIFORM

Sport is on Wednesdays; this is the only day that you can wear your FULL Sports uniform, including sports shoes. Sports uniform is required for your PE lessons: this needs to be brought to school in your bag and you will change at the beginning of PE lessons. Every other day, students are to wear the FULL SCHOOL UNIFORM, including black leather lace-up school shoes.

The Sports/PDHPE uniform consists of:

- Blue sport shorts with school logo
- Sports polo shirt with school logo
- School football socks (only for grade teams and available for purchase from the school) or white sports socks.
- Sports shoes





Canterbury Boys High School

220-252 Holden Street, CANTERBURY NSW 2193


☎: 02 9798 8444 ✉: canterburb-h.school@det.nsw.edu.au 🌐: www.canterburb-h.schools.nsw.edu.au

WE ARE A UNIFORM SCHOOL

If you must come to school out of uniform for any reason, you must bring a note from your parent or carer outlining the reason, with a date and signed by your parent.

Continual failure to wear school uniform without an acceptable explanation, could lead to suspension for continued disobedience for not following school procedures.

*All items are available at **LOWES Campsie** (except for sports shoes).*



Canterbury Boys High School

Campsie NSW 2193


UNIFORM PRICE LIST

All Products

S/S Blue Shirt with emb - JNR	From	\$41.95
S/S White Shirt With Emb - SNR	From	\$41.95
Grey College Deluxe Shorts	From	\$46.95
L/S Blue Shirt With Emb - JNR	From	\$45.95
L/S White Shirt With Emb - SNR	From	\$13.95
Sport SS Royal Polo Top	From	\$40.95
Sport Royal Shorts	From	\$38.95
Sport Royal Microfibre Track Pants	From	\$45.95
Sport Royal Microfibre Track Jacket	From	\$65.95
Royal Sloppy Joe	From	\$40.95
Striped Junior Tie	From	\$22.95
Royal Senior Tie	From	\$28.95
Navy Cap	From	\$19.95
Grey College Deluxe Trousers	From	\$62.95
Grey Trafalgar Crew Socks	From	\$5.95
Grey Blocker Shorts	From	\$26.95
Grey Blocker Trousers	From	\$32.95

ALL PRICES ARE SUBJECT TO ALTERATION


Campsie
14-26 Amy Street, Campsie, 486 2194
(02) 97183184




SHOP IN STORE OR ONLINE
www.lowes.com.au/schools-online

LOWES
will pay a commission
to the school on
every item of school
uniform sold in our
local store.

SCAN THIS QR CODE FROM YOUR
MOBILE PHONE CAMERA TO GO TO WEBSITE



 **WITH YOUR LOWES ZERO CARD YOU WILL RECEIVE 5% DISCOUNT ON EVERY PURCHASE, RECEIVE 5% IN REWARD POINTS TO REDEEM, PLUS GREAT FEATURES AND BENEFITS.**
for more information please contact Easy-Way on 1300 156 937 or zero@lowes.com.au

TRUTH AND HONOUR



SCHOOL CONTRIBUTIONS



The school's Finance Committee have determined the following schedule. The amounts requested by the school are:

GENERAL SERVICE CONTRIBUTION

There is a **voluntary** contribution of \$110.00. It is used to purchase technology, library resources and any other reference texts that will enhance your son's education. These additional educational opportunities can only be achieved through your contribution.

BOOK LEVY

Senior students are asked to pay a \$100 book levy for hire of school-owned textbooks. Textbooks will not be issued until the full amount has been paid. If families choose not to pay the hire, they must purchase their own textbooks.

SPORT CONTRIBUTIONS

Students selecting grade sport pay a fee of \$40 per term to cover the costs of buses, grounds and jerseys. Students attending off-site sporting venues pay entry to the venue only. School sport does not incur any fee.

SUBJECT CONTRIBUTIONS

While many subjects offered at the school do not involve any extra cost to students, some subjects do require students to cover the cost of additional equipment and consumables. Subject contributions vary from year to year because students choose different electives and the cost of equipment and consumables depends on prices from suppliers. Subject contributions are included in subject selection booklets each year. If subject contributions are not paid, students must provide their own equipment and consumables.

CALCULATORS

Please note that a scientific calculator is required for all examinations and NAPLAN tests. The calculator we use is:

Casio Scientific Calculator **fx-82AU PLUS II**

Approved by NSW Education Standards Authority (NESA)

Features include: Enters and displays expressions as written in textbooks; GCD/LCM; list based Statistics Data Editor; Random Integer Function.

Scientific calculators are available for purchase from the school office. They cost \$35

If you choose to buy or already have an alternate calculator, please make sure it is a scientific calculator.



SPORT

Sport is held every Wednesday afternoon from 12.50 pm to 2.35 pm for students in Years 7-10. The following grade sports are available to students:

SUMMER

Grade Basketball
Grade Cricket
Grade Mini-Soccer
Grade Touch Football
Grade Table Tennis

WINTER

Grade Oztag
Grade Soccer
Grade Table Tennis
Grade Softball



Also available are a range of recreational sports and activities including:



Fitness
School Sport

Chess
Table Tennis

Power Walking

Grade sport involves competition between eleven of the thirteen schools which make up the St George Zone. Grade sport involves travel on buses to other venues for 'away' matches and travelling with their coaches to local venues for 'home' matches. To participate in grade sport students must pay a fee of \$80 per season (two terms) for hiring of grounds, buses and referees, and for the provision of uniforms and equipment.

Only students who follow school rules, display good sportsmanship, pay grade sport fees and have high attendance rates will be permitted to participate in grade sport. Students who do not participate in grade sport will participate in recreational sports. All students, regardless of their chosen activity are required to wear their full sport uniform to school on Wednesdays.

During the year all students **must also attend our annual athletics, swimming and cross-country carnivals**. From these, students may be selected to represent the school at zone, regional or state carnivals.

There are also opportunities to represent our school at inter-school sports competitions. As a NSW public school we benefit from the opportunities for shared activities and competitions with other schools, coordinated by school sport associations. See the [School Sport Unit](#) website for details.



SPORT HOUSES

You will be placed in one of the 4 sport houses named after our distinguished alumni.

HOLA



Pierre Hola:

Rugby union player; represented Tonga in the Rugby World Cup, 2003 and the IRB Pacific Nations Cup, 2007



MORRIS



Arthur Morris:

Australian Cricket Test captain, 1951-52; inducted into the Sport Australia Hall of Fame, 1992, and the Australian Cricket Hall of Fame, 2001



MUNDINE



Anthony Mundine:

Australian former professional boxing champion and former rugby league footballer.



PEPONIS



Dr George Peponis:

Australian Rugby League Test captain, 1979-80; former chairman of the Canterbury Bulldogs





Canterbury Boys High School

220-252 Holden Street, CANTERBURY NSW 2193

☎: 02 9798 8444 ✉: canterburb-h.school@det.nsw.edu.au 🌐: www.canterburb-h.schools.nsw.edu.au

SWIMMING CARNIVAL

Monday,
26 February
Ashfield
Aquatic
Centre



TRUTH AND HONOUR



ATHLETICS CARNIVAL





Canterbury Boys High School

220-252 Holden Street, CANTERBURY NSW 2193

☎: 02 9798 8444 ✉: canterburb-h.school@det.nsw.edu.au 🌐: www.canterburb-h.schools.nsw.edu.au

SCHOOL PHOTO DAY

Order forms will be distributed to all students prior to school photo day. All students must return the order envelope to the Photographers on the day (regardless of whether an order is being placed or not). Those families wishing to order school photos need to include payment / payment details with the envelope on its return.

Tuesday,
27 February
2024
Note: bring
a SMILE!!!

[a] Academy
School Photography
& Production
www.academyphoto.com.au

School Photographs Order Envelope

pack A	2 - 18x13cm 4 - 9x6.5cm 4 - wallets 1 - student book	
pack B	1 - 25x20cm 1 - high resolution digital download 1 - student book	
pack C	1 - 25x20cm 3 - 18x13cm 4 - 13x9cm 4 - 9x6.5cm 4 - wallets 1 - student book 1 - high resolution digital download	
pack D	2 - 18x13cm 4 - 9x6.5cm 4 - wallets	
STUDENT BOOK ONLY pack E		

Credit Card Voucher. If you are using credit card facilities, please detach this slip and place inside envelope.

TRUTH AND HONOUR



Canterbury Boys High School

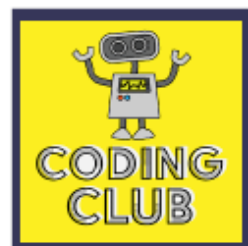
220-252 Holden Street, CANTERBURY NSW 2193

☎: 02 9798 8444 ✉: canterburb-h.school@det.nsw.edu.au 🌐: www.canterburb-h.schools.nsw.edu.au

SCHOOL CLUBS



CANTERBURY BOYS HIGH SCHOOL EXTRACURRICULAR



TRUTH AND HONOUR



MUSIC PROGRAMS

Extra-curricular music programs at CBHS include:

- **Stage Band** – concert music orientated.

The Stage Band is comprised of students learning to play and perform cohesively in a music ensemble. The instruments offered with external private tutors are trumpets, trombones, alto and tenor saxophones. Other instruments involved in the stage band include electric piano, drums, electric bass and guitar.

Students receive their own musical instrument, instrument tutoring books, band sheet music and weekly a 45-minute lesson with their instrument tutor (total cost is \$100 annually). The objective is to learn to play a musical instrument and perform cohesively with other fellow student musicians within a stage band.

- **Canterbury Community Schools Band**



Canterbury Community Schools Band

The CCS band program aims to foster a love and understanding of music, develop skills in ensemble playing, and facilitate the building of friendships with other musicians from a broad cross-section of the schools and community.

Band members enjoy playing exciting and challenging music representing a wide range of styles. Gaining confidence in performance is an essential part of the program.

The many performance opportunities available ensure that students are able to perform to a very high standard each year.

The community of schools band program is available for students in Stage 3 and 4.

To register your interest click on the following link:
<https://forms.gle/rbDiFNLmEsCBZWAL9>



Music Club

The club is an environment where students come to the music room during lunchtimes to develop their musical ability on their chosen instrument or learn to create and record music via technology.

Drummers' Ensemble

The ensemble is open to all students. Students learn to perform using instruments such as djembe, bongos, congas, tom tom drums and more. African in foundation but exploring other cultures including Middle Eastern, Asian and European influences.

Various Ensembles for more experienced musicians


6-piece Jazz Ensemble
Stage 4 Rock Band
Stage 5 Band
Acapella Group





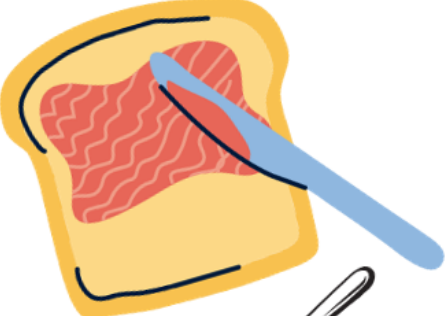
BREAKFAST CLUB

Canterbury Boys High School is part of the School Breakfast 4 Health Program and agree that *'a good breakfast will not only change a student's morning but will help improve their learning skills and attendance whilst also building meaningful connections between families, schools and their communities'*.

Breakfast Club runs 3 times a week and is run by staff and SRC students.



CANTERBURY BOYS HIGH SCHOOL



IT'S TIME FOR

Breakfast

**Canterbury Boys High School
Breakfast Club**

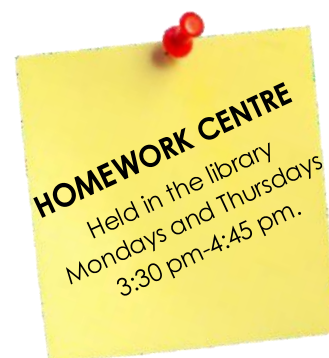
7:50 am to 8:20 am
Monday, Wednesday and Thursday
mornings in the
Common Room



HOMEWORK AND DEVELOPING A REGULAR STUDY ROUTINE

Completing homework reinforces and consolidates the learning done in the classroom. Developing a routine for homework and study is essential to becoming an independent, self-directed learner. A regular routine may include:

- revising work done in lessons
- researching and writing assignments and projects
- active reading
- working on formal assessment tasks
- preparing for tests.



There is always homework to do! Besides subject-specific tasks, our Accelerated Reader program requires student to read each afternoon. Students are expected to allocate a minimum of 20 minutes to reading.

The following time allocations are a guide, with consideration given to the time students spend on other activities so that there is a balance between commitments.

- **Year 7:** 50 / 60 minutes per night
- **Year 8:** 60 / 90 minutes per night

Students can help themselves by:	Parents can support their sons by:
<ul style="list-style-type: none">• Writing down all details of homework they are set in their diaries• Using the assessment schedule to plan and help manage their time• Recoding due dates for tasks and assessments in their diaries• Seeking help from teachers or parents if difficulties arise• Ensuring their homework is completed to a high standard• Developing an effective individual study timetable; and submitting assigned work punctually• Using our Homework Centre, where a teacher is available to help with homework• Not leaving work to the last minute!	<ul style="list-style-type: none">• Taking an active interest and supporting the completion of homework• Ensuring that there is time set aside for homework• Providing a dedicated place and desk for homework and study• Encouraging him to read and take an interest in current events• Communicating with teachers any concerns regarding homework• Ensuring he turns off electronic and gaming devices or other distractions while homework is being done.



BELL TIMES

The school day begins at 8.40am. School finishes at 3.15pm on Monday, Thursday and Friday. On Tuesday school finishes at 2.35pm. On Wednesday students attend Sport during Period 4 and finish at 2.35pm.

On Monday the school meets together for an assembly after Recess 1. Students assemble in Year Groups. Awards for excellence in a subject, sport and other events are presented. Often a guest speaker from outside the school will speak briefly on some topic of interest to the students.

	MONDAY	TUESDAY	WEDNESDAY	THURSDAY	FRIDAY
Warning Bell	8.35	8.35	8.35	8.35	8.35
Period 1	8.40 – 9.59	8.40 – 9.53	8.40 – 9.50	8.40 – 10.01	8.40-10.01
Recess 1	9.59 – 10.14	9.53 – 10.08	9.50 – 10.03	10.01 – 10.17	10.01 – 10.21
Assembly *	10.14 – 10.29				
Period 2	10.29 – 11.48	10.08 – 11.21	10.03 – 11.13	10.17 – 11.38	10.21 – 11.42
Recess 2	11.48 – 12.03	11.21 – 11.36	11.13 – 11.26	11.38 – 11.54	11.42 – 11.57
Period 3	12.03 – 1.22	11.36 – 12.49	11.26 – 12.06	11.54 – 1.15	11.57 – 1.18
Lunch 1	1.22 – 1.39	12.49 – 1.05	12.06 – 12.28	1.15 – 1.35	1.18 – 1.36
Lunch 2	1.39 – 1.53	1.05 – 1.20	12.28 – 12.47	1.35 – 1.51	1.36 – 1.51
Warning bell	1.53 – 1.56	1.20 -1.22	12.47 - 12.50	1.51 - 1.54	1.51 - 1.54
Period 4	1.56 – 3.15	1.22 – 2.35	12.50 – 2.35	1.54 – 3.15	1.54 – 3.15
Staff/Faculty Meetings		2.35 – 3.15			
Homework Centre	3.30 – 4.45			3.30 – 4.45	

*** Wet Weather Monday – NO Assembly (bell times will be same as Thursdays)**



NAPLAN

NAPLAN - National Assessment Program Literacy & Numeracy

As children progress through their school years, it is very important that checks are made along the way to see how well they are learning the essential skills of reading, writing and mathematics – skills that will set them upon the path to success as adults.

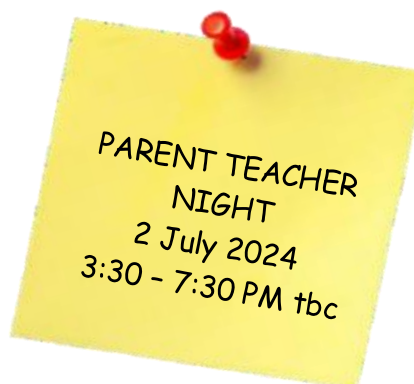
NAPLAN is a point-in-time assessment that allows parents to see how their child is progressing in literacy and numeracy against the national standard and compared with their peers throughout Australia. At the classroom level, NAPLAN provides additional information to support teachers' professional judgement about student progress.

For more information, go to <https://www.nap.edu.au/>



MEET THE TEACHER

Parent Teacher Night in Term 2 provides the opportunity for parents to discuss their son's academic progress with his teachers.





NSW SCHOOL IMMUNISATION PROGRAM

NSW Health works in partnership with schools to offer the vaccines recommended for adolescents by the National Health and Medical Research Council (NHMRC) in a school-based vaccination program. Parent information kits will be sent home to parents early in the school year. To consent to vaccination, parents are advised to read all the information provided, complete and sign the consent form and return it to their child's school. There will be an option to provide consent online.

In 2023 all Year 7 students will be offered:



Diphtheria, Tetanus and Pertussis (whooping cough) vaccine
as a booster dose for *all* students.



Human Papillomavirus (HPV) vaccine. 2 dose course.

All Year 10 students will be offered:



Meningococcal (ACWY) vaccine.



Will your child be in year 7 or 10 next year?

Provide consent for your child's routine school vaccinations online in 2024.

At the beginning of the school year, your child's school will share the link to complete the online consent form.



Year 7

- ☒ Diphtheria-tetanus-pertussis (dTpa)
- ☒ Human papillomavirus (HPV)

Year 10

- ☒ Meningococcal ACWY

More information on the school vaccination program:
health.nsw.gov.au/schoolvaccination

November 2023 © NSW Health, SHPN (WPTD) 230834.

NSW Health





ATTENDANCE PROCEDURES

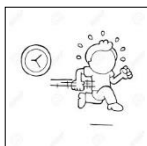
ABSENCE FROM SCHOOL



Students should only be absent from school for reasons such as illness or unforeseen circumstances. If a student is absent you will receive an SMS after 10 am. You may text a response. If a student has been absent, a signed note giving a reason for the absence (example below) must be provided. This note can be written in English or your first language. The student should hand the note in at the school office. Alternatively, the parent can email the school with the details.

Date:
Please excuse of Year
for being absent on (day & date)
Reason for being away:
Parent/Guardian Signature:

LATENESS



All students must report to the school office if they are late. Students should bring a note giving a reason for their lateness, signed by a parent or guardian.

Minutes lost = days lost per year

A couple of minutes here and there doesn't seem like much, but...

When your child misses just...

they miss days per year

5 mins
per day



=

3 days

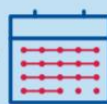


30 mins
per day



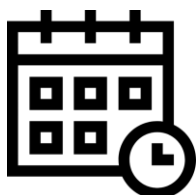
=

18 days



**Patterns of lateness
can have a serious
impact on your child's
education.**

education.nsw.gov.au



LEAVING SCHOOL DURING THE DAY

If students have to leave school during the day for an appointment or other reason they should bring a note from the parent or guardian (see example below) and place it in the box outside the first aid room before school starts at 8:40am. The Deputy Principal may ring to confirm the details in some instances. Alternatively, the parent can email the school with the details.

Students must pick up their early leavers pass from the office during the next break. Students must present their leavers pass to the teacher to be excused from class at the time of leaving. Students must carry the pass with them on the street as law enforcement officers can return students to school if they do not have it with them.

Date:
Please allow of Year
to leave school at (time and date)
Reason for leave:
Parent/Guardian Signature:

Sport is a **compulsory requirement** of study and not a time for making appointments or attending to other matters. However, if early leaving cannot be avoided on a sports day permission will only be granted if a phone call is received by the school before 12.00 noon confirming the request.

SICK BAY



If you become unwell at school, you need to:

1. Ask the teacher for a note to go to the office.
2. Upon reporting to the office, you will be seen by the first aid officer.
3. The first aid officer will decide if the parent/carer needs to be contacted.
4. You will not be able to use your mobile phone while you are in sick bay unless directed to do so.



TRAVEL TO SCHOOL

Students should travel directly to and from school in a safe manner (e.g. in groups, no detours, no waiting around at shops or railway stations). All students who live more than 2.0 kilometres in a direct line from school or have to walk more than 2.9 kilometres by the closest route to and from school are entitled to free school Opal cards. Eligibility can be checked and applications can be made online at www.transportnsw.info/school-students. Students who are ineligible can appeal to the Ministry of Transport on medical (must provide a doctor's certificate) or safety grounds or purchase a youth opal card.

GOVERNMENT BUSES AND SCHOOL SPECIALS

<https://transportnsw.info/contact-us/school-bus-operators-timetables>

Use the Trip Planner to plan your school bus travel in real time on any service operating in the greater metropolitan area. If you know your school route number, you can also download a timetable using the search tool. You can add a real time transport apps (eg *TripGo*; *Triptastic*; *TripView*) <https://transportnsw.info/apps> to your iphone or android

PRIVATE BUSES

Some out of area students may need to travel with private bus companies. For information about routes or timetables you can search for the bus route and timetable online or contact the bus company.

<https://transportnsw.info/document/2047/school-bus-map-sydney-metro.pdf>

TRAINS

The nearest railway station is Canterbury Station. Students can walk a short distance to and from Canterbury Boys High or catch one of the school special buses that connect from the station to the school. Timetables are available on <http://www.sydneytrains.info/> or you can call the Public Transport info line on 131500.

CONDUCT

Free bus and train travel is a privilege. Be polite and respectful at all times when traveling to and from school. You must give your seat to a paying passenger graciously and not wait to be asked. Opal cards may be confiscated by bus drivers or railway staff if students do not follow the guidelines issued by the Department of Transport.

LOST, STOLEN OR DAMAGED SCHOOL OPAL CARDS

There is a fee required to replace lost or stolen cards (payable to *Transport for NSW*). Cards will be reissued if damaged by ticket machines. Cards will not be reissued if damaged intentionally by the student.



SENTRAL PARENT PORTAL

The Parent Portal provides you access to:

- Student timetables
- Daily notices
- School calendar
- Homework/Assessment Task notifications
- Parent/Teacher Evening Booking



To access the portal, new parents need to register at

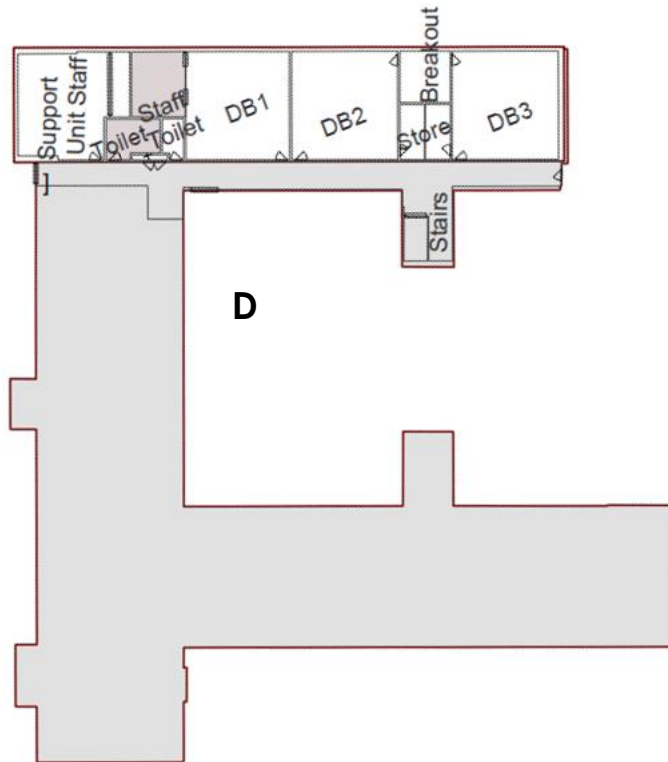
<https://cbhs.sentral.com.au/portal/register>

1. Register for an account using a valid email address to create a username and password
2. A verification email will be sent to your email address, click in the link provided and follow the steps shown, be aware this email may be sent to a spam folder
3. Once all of the above has been completed use the unique access key/s which will need to be typed as you see them into the box provided
4. When using your phone be sure to download the Sentral for Parents app, which can be found in the Google Play or Apple app store.

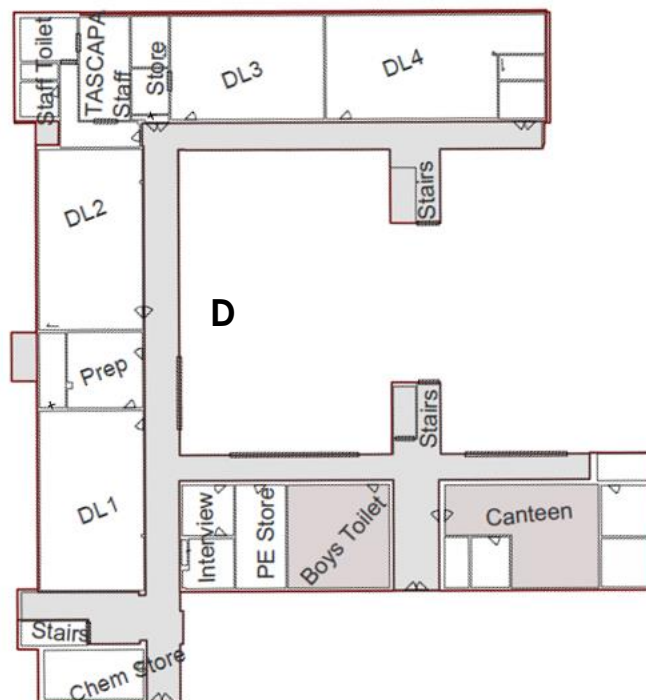


SCHOOL MAPS

BASEMENT



LOWER GROUND



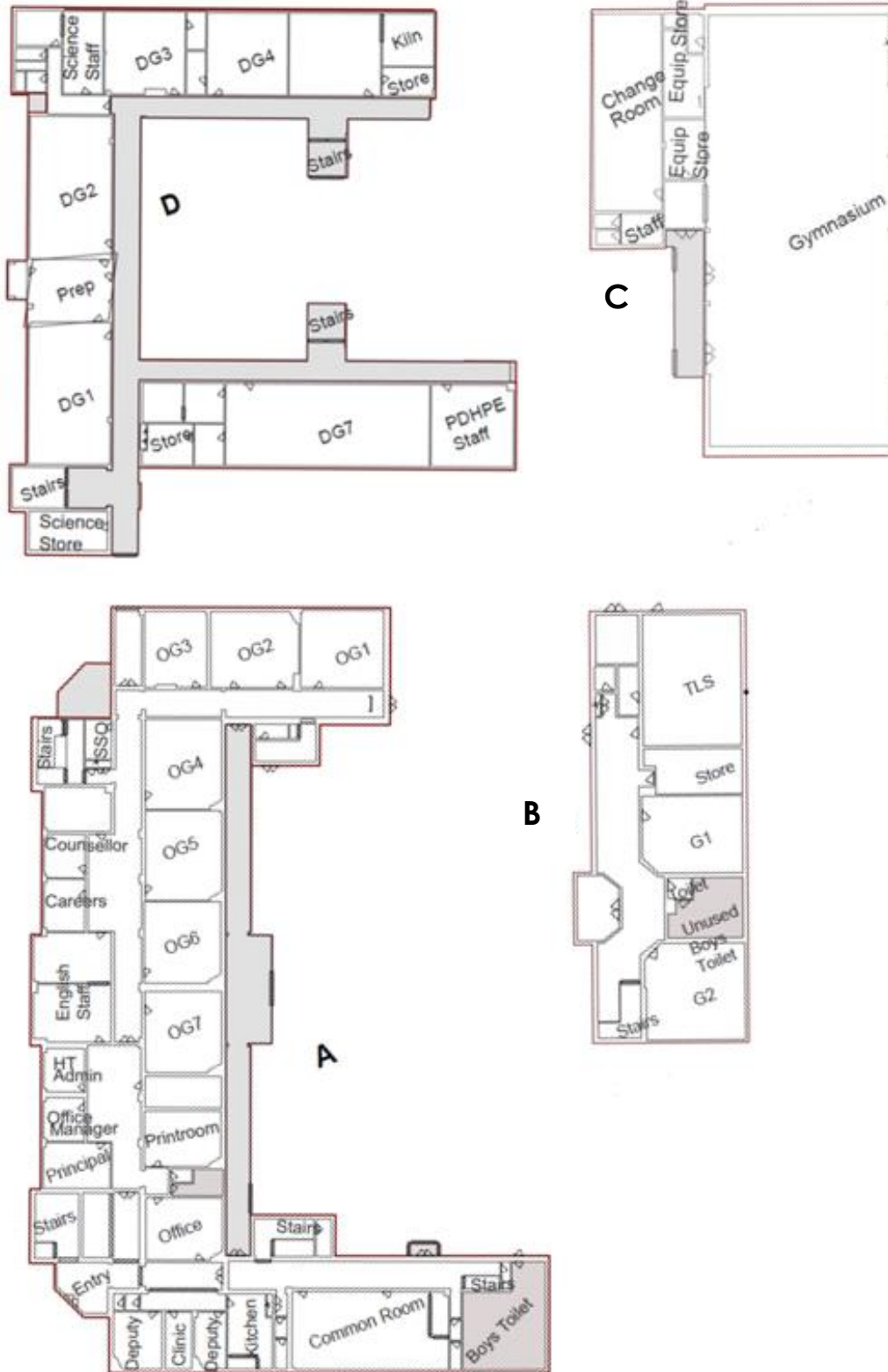


Canterbury Boys High School

220-252 Holden Street, CANTERBURY NSW 2193

☎: 02 9798 8444 ✉: canterburb-h.school@det.nsw.edu.au 🌐: www.canterburb-h.schools.nsw.edu.au

GROUND FLOOR



TRUTH AND HONOUR

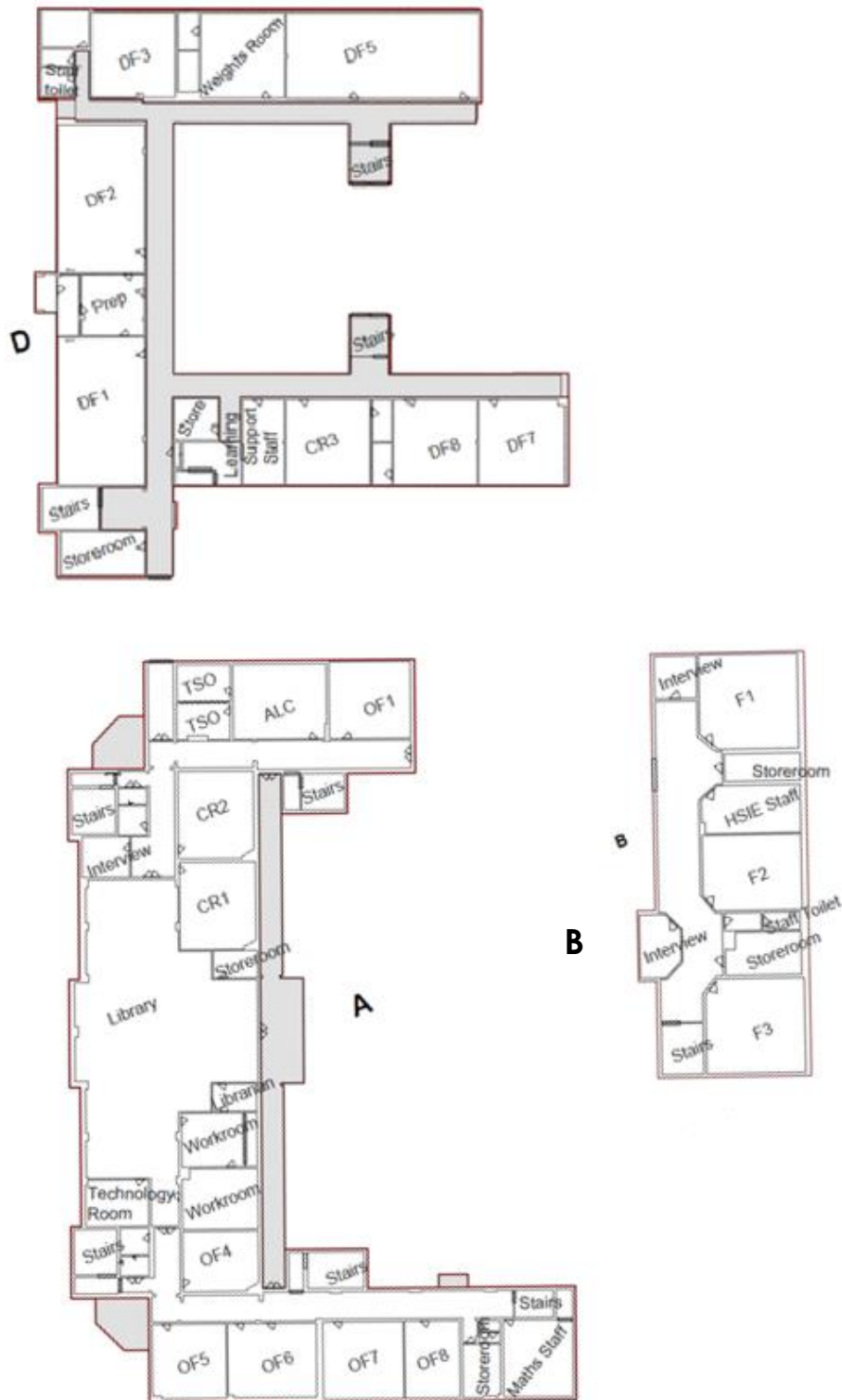


Canterbury Boys High School

220-252 Holden Street, CANTERBURY NSW 2193

☎: 02 9798 8444 ✉: canterburb-h.school@det.nsw.edu.au 🌐: www.canterburb-h.schools.nsw.edu.au

FIRST FLOOR



TRUTH AND HONOUR

