

ASSESSMENT POLICY & PROCEDURES



CANTERBURY BOYS HIGH SCHOOL

HSC Assessment Handbook 2024

NAME

Course Requirements for the completion of the Higher School Certificate

HSC Assessment Policy and Procedures 2024

Canterbury Boys' High School

Address for correspondence:

Canterbury Boys High School, Holden Street, Canterbury NSW 2193

Telephone: (02) 9798 8444

Email: canterburb-h.school@det.nsw.edu.au

Website: <https://canterburbh.schools.nsw.gov.au/>

UPDATED: September 2024

YEAR 12 ASSESSMENT POLICY & PROCEDURES 2023

CONTENTS

Introduction	5
General Information about the HSC	7
The Higher School Certificate	7
Eligibility for the HSC	7
Pattern of Study	7
HSC Record of Achievement	7
Performance Bands	8
HSC Minimum Standards	8
Students Online	8
Disability Provisions	10
The School's Responsibilities	11
The Student's Responsibilities	12
Assessment Task Procedures	14
Absence on the day of Assessment Tasks	15
Satisfactory Completion of a Course	16
N Determination Procedures Flow Chart	17
Cheating or Malpractice	18
Serious and Non-Serious Attempts	19
Approved Equipment for Assessment/Exams	19
CBHS Homework Policy	20
Information and Advice	21
Frequently Asked Questions	22
Misadventure Procedures	24
APPLICATION FOR ILLNESS AND MISADVENTURE FOR HSC ASSESSMENT TASK	25
APPLICATION FOR ALTERNATIVE ASSESSMENT TASK/TIME HSC ASSESSMENT TASK	27
APPEAL FORM HSC ASSESSMENT TASK	29
Subject Scope and Sequences	31
Ancient History – Scope and Sequence HSC 2024	32
Biology – Scope and Sequence HSC 2024	33
Business Studies – Scope and Sequence HSC 2024	34
Engineering Studies – Scope and Sequence HSC 2024	35
English Advanced – Scope and Sequence HSC 2024	36
English Standard – Scope and Sequence HSC 2024	37
Food Technology – Scope and Sequence HSC 2024	38
Information Processes and Technology (IPT) – Scope and Sequence HSC 2024	39
Mathematics Advanced – Scope and Sequence HSC 2024	40
Mathematics Standard 2 – Scope and Sequence HSC 2024	41
Mathematics Standard 1 – Scope and Sequence HSC	42
Mathematics Extension 1 – Scope and Sequence HSC	43
Modern History – Scope and Sequence HSC	44
Music– Scope and Sequence HSC 2024	45
PDHPE – Scope and Sequence HSC 2024	46
Physics – Scope and Sequence HSC 2024	47
SLR – Scope and Sequence HSC 2024	48
Visual Arts– Scope and Sequence HSC 2024	49

Subject Assessment Schedules	50
Ancient History	51
Biology	52
Business Studies.....	53
Engineering Studies	54
English Advanced	55
English Standard.....	56
Food Technology	57
Information Processing and Technology.....	58
Mathematics Advanced.....	59
Mathematics Standard 2	60
Mathematics Standard 1	61
Mathematics Extension	62
Modern History.....	63
Music.....	64
Personal Development Health and Physical Education	65
Physics.....	66
Sport, Lifestyle and Recreation	67
Visual Arts	68
Assessment Schedule Planner 2023/24	69

Introduction

Congratulations! If you are reading this you have successfully completed Year 11 and are undertaking the HSC in 2024.

If you have friends or family who have completed Year 12 successfully, you will understand the academic workload that Year 12 brings. Some of you are already reaping the rewards of hard work and I congratulate those of you who have excelled in your Year 11 studies.

There is also a proportion of students who need to greatly increase their effort and follow the guidance of teachers as specified in their Preliminary report. These comments are important; especially if you do not need an ATAR, as your report comments may be the path to an apprenticeship, parttime work or entry to further study. The most employable people are those who follow our Learning Habits and are prepared, productive, polite, have excellent attendance and commit themselves positively. I cannot stress enough the importance of a positive mindset as you enter Year 12.

Remember that parents, teachers, your Year Adviser and the Careers Adviser are all excellent resources to support your journey. Your Year Adviser and the Careers Adviser are available to assist you if you have any concerns or problems regarding your Higher School Certificate, the Australian Tertiary Admission Rank (ATAR) or whether your pattern of study best suits the career path you wish to take. It is most important to keep your Year Adviser up to date with changes to your study. They will provide you with support if you are experiencing any problems that may affect your studies.

It is important to remind you that you must:

- Apply yourself diligently at all times and complete/submit all assessment tasks on time and in compliance with NESA guidelines. Including submission, illness and misadventure, plagiarism and appeals
- Realise that assessment tasks are worth 50% of your HSC mark. This is to reward effort and skills that cannot be tested in the HSC examination. Therefore, they are very important.

It is also important to be advised that:

- This handbook is the ultimate guide. Become familiar with it and keep a hard copy
- Remember to abide by 'All My Own Work'- never give someone your work to copy. You will also receive zero marks for plagiarism
- If you are struggling, ask for help.

Student assessment provides evidence for making judgement about student achievement. It also allows students to be aware of their progress towards meeting outcomes and helps teachers plan for effective teaching and learning.

Higher School Certificate assessment tasks can occur between Term 4 2023 and Term 3 2024. **This booklet contains important information about your HSC assessment.** Its purpose is to communicate the policies, procedures and rules in relation to internal assessment in Stage 6 at Canterbury Boys High School. It seeks to provide contextual clarification of the rules and processes specified by the NSW Education Standards Authority (hereby referred to as NESA). It also contains the assessment schedule for all Year 12 HSC courses at Canterbury Boys High School.

A planner is provided on page 5, complete it and use it for planning and studying purposes. Familiarise yourself with each relevant course schedule and seek clarification from your class teacher or the Head

Teacher of the course **before** the task is attempted.

Excellent attendance is essential for success. If you are going to be absent for an extended period of time, you must seek approval from the Principal, however, extended leave for Year 12 students is unlikely to be approved unless in extenuating circumstances.

HSC school-based assessment in Year 12 rewards consistent, diligent performance. Assessment tasks may assess aspects of the course that are not examined in the Higher School Certificate examination. Not every piece of work completed will be part of the “assessment” mark: Some work is set to practise skills so that the students can see how well they understand the topic. Students are required to be diligent and complete all tasks presented to them. **All set work should be regarded as an essential course requirement**, even when it is not included as an assessment task.

We wish you every success with your studies.

R Dummett
Principal

C Dwyer
Deputy Principal

S Ali
Year 12 Year Adviser

General Information about the HSC

The Higher School Certificate

The Higher School Certificate (HSC) is the highest educational credential in New South Wales schools. It is awarded to NSW students who have satisfactorily completed Years 11 and 12 at secondary school. To be eligible, students must meet both Preliminary and HSC course requirements and sit the state-wide HSC examinations. The HSC is an internationally recognised credential that provides a strong foundation for students wishing to pursue tertiary qualifications, vocational training or employment.

Eligibility for the HSC

The rules and requirements for HSC eligibility are governed by NESA and are published in the Assessment, Certification and Examination (ACE) Manual. To be eligible for the HSC, students must:

- Meet the HSC minimum standard in Literacy and Numeracy
- Satisfactorily complete Years 9 and 10 or gain other qualifications that satisfy NESA
- Attend a government school, an accredited non-government school, a NESA-recognised school outside NSW, or a TAFE college
- Complete HSC: All My Own Work (or its equivalent) before submitting any work for Preliminary or HSC courses, unless a student is only entered for Year 11 and Year 12 Life Skills courses
- Satisfactorily complete courses in the patterns of study that are detailed in the following section
- Satisfactorily completed at Preliminary level any subject you study at Higher School Certificate level
- Sit for and make a serious attempt at the required HSC exams.

Pattern of Study

To qualify for the HSC, a student must satisfactorily complete:

- A Preliminary pattern of study that includes at least 12 units
- An HSC pattern of study that includes at least 10 units

Both patterns of study must include:

- At least 6 units from Board Developed Courses
- At least 2 units of a Board Developed Course in English, or English Studies
- At least 3 courses of 2 units value or greater (either Board Developed or Board Endorsed Courses)
- At least 4 subjects

HSC Record of Achievement

HSC results are available in the [Students Online](#) account and sent to students by email and SMS in December. Students can also download and print their full credentials from Students Online in December. Hard copies of the testamur (certificate) are sent in the mail in January the following year. Samples can be viewed on [NESA's HSC Credentials page](#).

The first page of the Record of Achievement will list your results in each HSC course you completed. For Board Developed Courses with an external HSC exam, these results will report your achievement against standards that clearly describe your level of knowledge, skills and understanding. These reports will show you:

- The performance bands
- What a typical student knows and can do at each achievement level

- A graph of the mark distribution for the course.

If you are not eligible for an HSC and are leaving school, you may still receive a Record of School Achievement (hereby referred to as RoSA). Your RoSA will show your results in all Year 10, 11 and 12 courses that you completed. If you are not eligible for a RoSA, you will receive a Transcript of Study listing your results.

Performance Bands

Student performance in each HSC course is measured against defined standards. HSC marks for each course are divided into bands and each band aligns with a description of a typical performance by a student within that mark range. The performance bands and descriptions give meaning to the HSC mark. For a 2-unit course, Band 6 indicates the highest level of performance, and the minimum standard expected is 50:

- Band 6 = 90 – 100 marks
- Band 5 = 80 – 89 marks
- Band 4 = 70 – 79 marks
- Band 3 = 60 – 69 marks
- Band 2 = 50 – 59 marks
- Band 1 = 0 – 49 marks

Each band is aligned to what a student at that level of performance typically knows, understands and can do. The 'average' performance in most courses is usually a mark in the mid-70s (Band 4). Band 1 indicates that a student has not met enough of the course outcomes for a report to be made. Band 1 includes marks ranging from 0 to 49. For an Extension course, the bands are E4 (highest level of performance) to E1

HSC Minimum Standards

Students need to meet a [minimum standard of literacy and numeracy](#) to receive the HSC. Literacy and numeracy skills are key for success in everyday life. Achieving the HSC minimum standard means students will have the [level of skills](#) necessary for success after school.

Students show they have met the HSC minimum standard by passing [online tests](#) of basic reading, writing and numeracy skills needed for everyday tasks. The minimum standard online tests are not based on NAPLAN.

Students master basic skills at different stages so there are multiple opportunities available for students to [understand what to expect](#) and pass the minimum standard online tests, from Year 10 until a few years after Year 12. Some students will be [eligible for disability provisions for the minimum standards tests, or an exemption](#) from the HSC minimum standard requirement.

Students Online

[Students Online](#) provides students in Years 10, 11 and 12 with useful information about senior school study, particularly on assessment, examinations and results, and how the HSC works. Year 10, 11 and 12 students in NSW are eligible for a Students Online account. The email address students have provided to NESA through their Confirmation of Entry along with the NESA Student Number are needed to activate the account.

Go to <https://studentsonline.nesa.nsw.edu.au>

STUDENTS ONLINE
for NSW students in Years 10 to 12

HOME MY ACCOUNT HELP CONTACT US ABOUT

About Students Online

Students Online is your source for information about your [senior school study](#), from Year 10 to the HSC.

Find information about school-based [assessment](#), HSC [exams](#) and [results](#), including grades, how the HSC works, preparing for exams and more. Log in with your Student Number and PIN to access your personal study details.

Students Online is developed and delivered by the [NESA](#).

Your account – My Details

My Details is where you will find your personal study details, including your:

- contact details
- course enrolments
- grades and HSC marks
- personal HSC timetable
- HSC assessment ranks.

Login

Login below or [activate your account now](#)

Student Number:

PIN:

☐ I'm not a robot

reCAPTCHA
Privacy - Terms

LOG IN

[Trouble logging in?](#)
[Forgot your PIN?](#)
[Your security](#)

Click on activate your account now

STUDENTS ONLINE
for NSW students in Years 10 to 12

HOME MY ACCOUNT HELP CONTACT US ABOUT

Account activation

Activate your Students Online account

Access your enrolment details see your accumulating results and download your credential with your Students Online account. All NSW high school students in years 10, 11 and 12 are eligible for an account.

Submit your details below. Your NESA Student Number will be displayed and you will also be sent an email to the address your school has supplied to NESA. Open the link in your email and enter your NESA Student Number to create your six-digit PIN.

If you have issues activating your account, contact your school to check how your details, particularly your given name and email address, are officially recorded.

Activate my account

School: *

Proceed to answer all the questions and submit. Once you have done this you will be asked to go to the email you have registered at your school. Click the link provided in the email. Then follow the prompts.

If there are any difficulties, refer to the [Help and advice using Students Online](#) page or see the NESA Coordinator, Ms Giameos.

Disability Provisions

[Disability provisions](#) are approved by NESA to provide students who have a permanent or temporary disability with practical support in the Higher School Certificate examinations. Regardless of the nature of the disability, the provisions granted will be solely determined by the implications for the student's functioning in an examination situation.

Schools are responsible for any decisions made at school level to offer provisions to students with a disability in course work, assessment tasks and in-school tests. NESA can offer no guarantee that school-determined provisions will apply in the Higher School Certificate examinations, as each application is individually assessed to ensure consistency and equity.

To apply for provisions, schools must submit an online application to NESA through Schools Online. This application tells us which provision/s a student is requesting and includes recent evidence. Evidence may include medical reports, reading results, spelling results, writing samples and teacher comments. Decisions on applications will be communicated to the school through Schools Online and the school will communicate this decision to the student.

Students and parents/caregivers are strongly advised to consult the [NESA website](#) for more information about Disability Provisions.

If you wish to apply for disability provisions you should do so as soon as possible. Ask the Deputy Principal or Learning and Support Teacher about lodging an application with NESA.

Disability provisions are not available:

- as compensation for difficulties in undertaking a course or preparing for the test and/or
- for lack of familiarity with the English language.

The school will provide students with their 'time to rest' provisions **within their own classroom** during in-class assessments. During examination periods, students will be provided with small group supervision.

The School's Responsibilities

Canterbury Boys High School has developed an assessment program for each course. The school's responsibilities include providing information to students in relation to the following:

1	<p>Number of tasks - Identifying a minimum number of tasks that will be used to measure students' achievement in each syllabus component. Three to four tasks of various types (e.g. formal examinations, practical tests, oral tests), including the Trial HSC exam, are sufficient to assess the components of a 2-unit course. For 1-unit courses, two to three tasks are sufficient</p>
2	<p>Weightings - Allocating weightings to each of the tasks in accordance with the component weightings and the school's judgement of the relative importance of each task. The minimum weighting for an individual task is 10%. The maximum weighting for an individual task is 40%. Only one task may be a formal written examination with a maximum weighting of 30%.</p>
3	<p>Scheduling tasks - Scheduling the assessment tasks for Year 12 courses, being mindful of the demands these tasks will place on students and teachers.</p>
4	<p>Written advice to students - Providing students with written advice about the school's requirements for assessment in each course. This is generally provided to students 2 weeks prior to a task.</p>
5	<p>The advice given to students must include:</p> <ol style="list-style-type: none"> The components and their weightings as specified in the assessment and examination materials on the NSW Education Standards Authority website The general nature of each assessment task A schedule of when assessment tasks are planned to take place. In addition, there must be provision for adequate notice of the precise timing of each assessment task The weight value of each task in relation to the total weighted mark for the course Details of administrative arrangements associated with each task Details of the school's policy on malpractice in assessment tasks Details of the procedures to be implemented if tasks produce invalid or unreliable results. Note that the results of assessment tasks that have been completed by the students generally cannot be discarded
6	<p>Appropriate procedures: Marking, recording, reporting.</p> <p>Marking of assessment tasks will be completed in accordance with the prescribed marking criteria. Students will be provided with their raw mark for each assessment task. Each student should receive clear feedback on their performance in every task. This feedback should indicate the student's attainment in the task relative to the outcomes and the student's relative position within the school group (rank order sheet published).</p>

The Student's Responsibilities

Students have a range of responsibilities in relation to the successful attainment of the HSC credential. These include:

1

FAMILIARITY WITH ASSESSMENT POLICY

You must be familiar with the assessment policies set out in this book for each subject you take.

2

ATTENDANCE

Attend school, be aware of due dates for assessment tasks and complete tasks on time. If you are absent from school, you must check with your teachers to see if any assessment tasks have been set on the first day of your return to school.

3

PUNCTUALITY

Be on time for assessment tasks as you will not be given an extension of time. If you are late to any task held in school time or at the beginning of the day, then the Deputy Principal or the Principal must verify that you have a legitimate reason for being late and give you a note to that effect.

4

ATTENDANCE ON DAY OF TASK

Be present for all in-school assessment tasks. Students who are absent on the day of the task must provide a doctor's certificate or other evidence explaining this absence. See Section 5 of this booklet: *Absence on the day of a task* for further information. You must sit for, or submit, a minimum of 50% of all assessment tasks on the due day.

5

HAND IN TASKS

Submit any take home assessment task on time. Work will only be accepted from the student themselves. If you are absent on the day a hand-in task is due, contact your teacher to inform them of your absence. Submit the task on **your first day back at school**. You must then see the Head Teacher/Deputy Principal to apply for Illness/Misadventure on your return to school.

6

SATISFACTORY COMPLETION OF COURSE

Meet the requirements to satisfactorily complete all courses.
See Section: Satisfactory Completion of a Course

7

NOTIFICATION OF CLASHES FOR OTHER SCHOOL BUSINESS

Notify your teacher and Head Teacher of any assessment problems in advance, e.g. clash of dates with an excursion or knockout team. You must discuss this situation with the Head Teacher of the subject that has the assessment task and apply for an alternative task time before the due date.

8

ILLNESS/MISADVENTURE AT TIME OF ASSESSMENT

If you come to school and become ill on the day of an assessment task, or, have suffered a misadventure immediately prior to the day of an assessment task, **you must inform the Deputy Principal on the day of the task prior to the completion of the task**. You may **not** apply for Illness/Misadventure **after** the assessment. Illness/Misadventure forms must then be submitted to the Deputy Principal, supported by a doctor's certificate, upon your return to school.

9

KNOWN ILLNESSES

If you are a student with a known illness that is documented with the Deputy Principal and/or the School Counsellor, you can negotiate an extension only at the time of the issuing of the task.

10

CHECKING OF TASKS

Check the marking of each task when it is returned to you. Check your assessment rank when it is given to you.

12

PROLONGED ABSENCES

Some prolonged absences, for example, a holiday overseas, cannot be considered and could lead to you not meeting outcomes in that subject. You must seek approval from the Principal before you take your leave.

Assessment Task Procedures

1

NOTIFICATION OF TASK

You will be given at least **two weeks' notice in writing** of any assessment task. All of the class will be asked to sign a "record of issue/collection of task" form stating the date and time of day the task is due.

2

SUBMISSION OF DRAFTS

Students may submit draft work for marking. Students need to liaise with their teachers to negotiate the cut-off for when drafts will be accepted by teachers.

3

COMPLETION OF ASSESSMENT

Assessment tasks must be submitted, or undertaken, on the due date. A zero mark will be awarded for work submitted late or if a student is absent and no exceptional circumstances exist for the late submission or absence.

4

WORK PLACEMENT, KNOCKOUT SPORT AND OTHER SCHOOLS ACTIVITIES

If you are completing compulsory work placement you will not be disadvantaged. If there is sufficient time prior to commencing work placement the task can be submitted early. It is your responsibility to notify your teacher and Head Teacher once you are aware that you will be on work placement when the task is due. A new date may be set by the Head Teacher which should be recorded on the "record of issue/collection" form.

If you are involved in knockout sport or other school-based activity, you must notify your teacher and Head Teacher as soon as you are aware of the clash of dates. Permission to attend the knockout game will be at the discretion of the Head Teacher and Head Teacher Science/PDHPE. You may be given the option of completing the task prior to competing in the knockout game or, if it is a research task, you need to arrange for it to be handed in to your teacher on the required day.

5

RETURNING OF A MARKED TASK

On the day you receive a marked task back, teachers will provide you with your task and feedback. It is your responsibility **at that time** to:

- Check marks have been correctly added and match the marks given by the teacher
- Ask questions about the marking of a question if you are concerned or confused.

6

APPEALS

Any complaints or questions about assessment procedure should be made in the first place to the classroom teacher. Further appeals may be made to the Head Teacher of the appropriate faculty and then to the school's review panel.

The request for review must be made within three days of the issue of assessment ranks. The way marks were awarded by the teacher for assessment tasks will not be subject to review.

The school review panel will consist of the Deputy Principal, the Head Teacher concerned, and the NESA coordinator.

The Year Adviser may act as student advocate in these cases. A student who is dissatisfied with the school's review procedures may appeal to NESA.

Absence on the day of Assessment Tasks

1	Every endeavour should be made to come to school on the day of an Assessment. However, if you are ill or have a misadventure occur, contact your teacher or the Head Teacher of the faculty by 8.40am (through email or a phone call) on the day of task to let them know that you will be absent and the reason for this absence.
2	Obtain a Doctor's Certificate or other documentation to explain your absence. This Doctor's Certificate must be obtained on the day of the task, not in retrospect. If you are also absent in the days after the task, your Doctor's Certificate must cover these absences as well. Medical certificates must be issued by a qualified medical practitioner, preferably your family doctor or specialist. A medical certificate that merely states you were unfit for work/study is insufficient. Specific reasons must be supplied.
3	On the morning of your return to school, prior to 8.40am, you must see the Deputy Principal with your Doctor's Certificate and ask for an Illness/Misadventure Application form. You are then to complete this form in consultation with the DP.
4	You will be required to undertake any missed task in consultation with the Head Teacher of the relevant faculty. The date and time of this task will be determined by the Head Teacher. You will be required to complete this task regardless of the success or otherwise of your Illness/Misadventure Application.
5	The Illness/Misadventure Application will go to a panel, and either be accepted or declined. If it is accepted you will be awarded a mark for the task. If the application is declined you will be awarded zero mark for this task. Students may appeal against the panel's decision by lodging an ASSESSMENT APPEAL FORM with the Principal within one (1) week of the initial determination.
7	Computer and technology issues: Students are strongly advised to prepare work that will be handed in using an online program such as Google Docs. Computer and associated technology malfunction without evidence of "work in progress" is not a reason for late submission. "Lost work" without a backup copy will not be accepted as a reason for late submission.

Satisfactory Completion of a Course

1

For a student to satisfactorily complete a course, NESAs requires the principal to have sufficient evidence that you have:

- (a) Followed the course developed or endorsed by NESAs; *and*
- (b) Applied yourself with diligence and sustained effort to the set tasks and experiences provided in the course by the school; *and*
- (c) Achieved some or all of the course outcomes.

2

To have successfully “*followed the course developed or endorsed by NESAs*”, you must:

- Have both excellent overall school attendance and subject attendance.
- Complete a significant amount of non-assessable work such as class work, homework, practical work and other learning tasks the teacher has assigned.

3

To have successfully “*applied yourself with diligence and sustained effort to the set tasks and experiences provided in the course by the school*”, you must:

- Complete all assessments.
- Make a genuine attempt for all tasks.
- Complete a significant amount of non-assessable work such as class work, homework, practical work and other learning tasks the teacher has assigned.

4

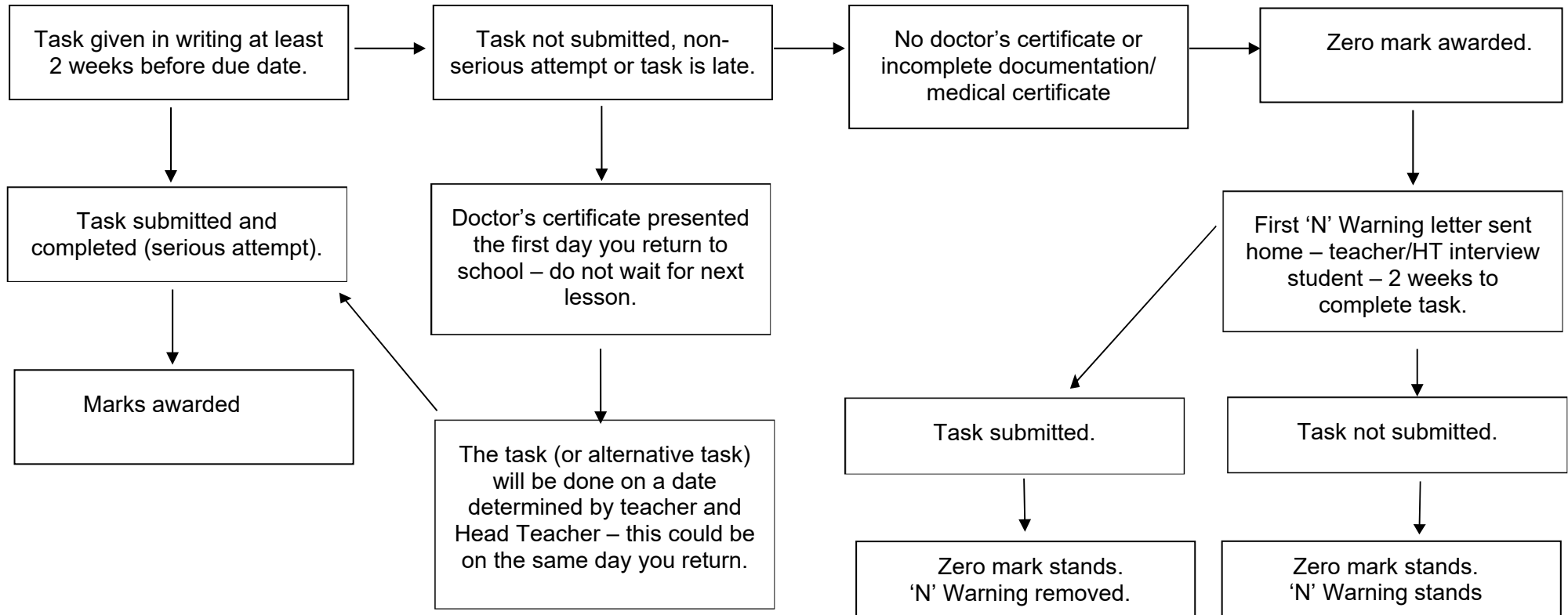
To have successfully “*achieved some or all of the course outcomes*”, you must:

- Have demonstrated the capacity to achieve some of the course outcomes through the completion of both formal and informal assessment.
- Have both excellent overall school attendance and subject attendance.

5

- A failure to meet these requirements will see N Warning letters sent to students and their parents/carers.
- Students will be given the opportunity to correct the problem indicated on the N-Warning Letter.
- Students who have not complied with the requirements for satisfactory completion of a course at the time of finalising assessments cannot be regarded as having satisfactorily completed the course and an N Determination may be issued.

N Determination Procedures Flow Chart



If two N Warning letters are sent for any course, the deputy principal interviews student and contacts parents.
 If a third N Warning is sent for any course, the principal contacts parents to discuss the N-Determination process in detail.
 Failure to improve and complete outstanding tasks may result in an N Determination.

Cheating or Malpractice

All work presented in assessment tasks and external examinations (including submitted works and practical examinations) must be a student's own or must be acknowledged appropriately. Malpractice is any activity that allows students to gain an unfair advantage over other students.

Malpractice, including plagiarism, will limit your marks for the task or examination, and will jeopardise your results.

Each student's mark will be determined by the quality of the work produced by the student only. Any component of a student's work that has been written, created or developed by others must be acknowledged in accordance with NESA's subject specific documentation. General teaching and learning do not require formal acknowledgement.

Malpractice is any activity that allows students to gain an unfair advantage over other students. It includes, but is not limited to:

- Submitting work produced or contributed to by artificial intelligence (such as Chat GPT) and presenting this work as their own
- copying someone else's work in part or in whole, and presenting it as their own
- using material directly from books, journals or the internet without reference to the source
- building on the ideas of another person without reference to the source
- buying, stealing or borrowing another person's work and presenting it as their own
- submitting work to which another person such as a parent, coach or subject expert has contributed substantially
- using words, ideas, designs or the workmanship of others in practical and performance tasks without appropriate acknowledgement
- paying someone to write or prepare material
- breaching school examination rules
- using non-approved aids during an assessment task
- contriving false explanations to explain work not handed in by the due date, and
- assisting another student to engage in malpractice

Students involved in malpractice in relation to any assessment task will be referred to the Head Teacher of the relevant subject and then the Deputy Principal. They will review each case of malpractice on its merits, considering all the issues, in order to arrive at a fair conclusion and make recommendations to the Principal. In the case of suspected plagiarism, students will be required to provide evidence that all unacknowledged work is entirely their own.

Such evidence might include but is not limited to the student:

- Providing evidence of and explaining the process of their work, which might include diaries, journals or notes, working plans or sketches, and progressive drafts to show the development of their ideas.
- Answering questions regarding the assessment task, examination or submitted work under investigation, to demonstrate their knowledge, understanding and skills. Students suspected of malpractice will be required to demonstrate that all unacknowledged work is entirely their own.

All students who are found to have engaged in cheating and malpractice will be recorded in NESA's Register of Malpractice, as required by their guidelines. Malpractice will also result in an N Warning letter and zero marks awarded for the task.

Serious and Non-Serious Attempts

Students should enter an assessment task knowing they **MUST** make a genuine effort at the task or exam. NESA Rules and Procedures describe the requirements that students make a serious attempt to answer the examination questions – failure to do so is called a non-serious attempt or a non-attempt.

A student's task or exam is considered a non-attempt if there is no evidence of academic engagement with the task or exam. Students are required to attempt a range of question types throughout the examination paper and must satisfactorily attempt all sections. It is not sufficient to answer multiple choice questions only. Merely rewriting the question is not considered to be an adequate attempt at the paper.

A non-serious attempt includes where the students write frivolous or objectionable material in response to the questions. If a student is identified as providing non-serious or non-attempts they will be asked to justify why they should receive a result in the task or course concerned.

Approved Equipment for Assessment/Exams

Only approved equipment can be used in Preliminary and HSC assessments and examinations.

It is the student's responsibility to ensure they know what equipment is permitted. Mobile phones, smartwatches and other electronic devices are not permitted in examinations.

The scientific calculators in the link below are approved for use in the 2022 Higher School Certificate examinations. The examinations in which scientific calculators are permitted are listed in the [equipment checklist](#).

A full list of the equipment required for each subject in the HSC Exams can be found at this link: <https://educationstandards.nsw.edu.au/wps/portal/nesa/11-12/hsc/rules-and-processes/exam-equipment-list>

Instruction booklets or cards (eg reference cards) on the operation of calculators are NOT permitted in the examination room. Candidates are expected to familiarise themselves with the calculator's operation beforehand.

Calculators must have been switched off for entry into the examination room.

CBHS Homework Policy

The main purpose of homework is to support learning. Research indicates that homework will only achieve this purpose if it is well-planned and meaningful. At Canterbury Boys High School, we strongly believe that it is important for all boys to have homework designed to meet specific learning goals. The amount of homework and time spent on it should vary with the student's age and developmental level.

Time expectations for homework

The teacher will indicate the time that most students should require for the completion of the task which is assigned. The following are our recommended guidelines. They aim to ensure that neither too much nor too little homework is given on most nights.

Students who are absent from class or do not complete classwork in a timely manner will be responsible for catching-up missed work in their own time.

Year 12

2 - 3 hours per night. Weekend work will be required regularly to keep on top of HSC course demands and assessments. Holiday revision is normal for most students and many use vacation time on long-term assessment tasks.

Guidelines for Students

- Homework is an important part of your learning and you should make it a priority to complete all homework as well as you can.
- Get organised by using a diary to record all the work you are given. This will help you to plan the books you need to take home and the time you will need to do the work each night.
- If you have a valid problem with getting your work done, bring a note from your parents or discuss it with your teacher at the start of the lesson eg exceptional family commitments, co-curricular and extra-curricular activities, feeling unwell, work is too difficult, and you need help etc. Your teacher will be as understanding as possible.
- Ask your teacher in advance for an extension of time. Discuss problems with your teacher, who will be pleased to see that you are interested in doing as well as you can.

For more information go to [Homework Policy \(NSW Department of Education\)](#)

The Homework Centre

The Homework Centre runs every Monday and Thursday afternoon in the School Library from 3:30-4:45pm. The Homework Centre is free and supervised by a staff member. The Homework Centre is designed to assist those who need help with their homework or study.

Students may come and do their own study or homework. Students can use the Centre as required – it is not a permanent commitment and students are not required to stay the full time.

Information and Advice

Advice on assessment is available from:

- The Deputy Principal
- The Head Teacher of the faculty concerned
- Your classroom teacher
- The Careers Adviser
- Your Year Adviser

It is most important to keep your Year Adviser up to date with changes to your study. They will provide you with support if you are experiencing any problems that may affect your studies.

Information is located:

- NESA website – www.nesa.nsw.edu.au
- Rules and Procedures for Higher School Certificate Candidates - NESA booklet issued to each student
- HSC Assessment Policy and Procedures – spare copies with the Year Adviser and Deputy Principal and on school website
- Faculty Assessment Schedules

Vocational Education and Training (VET):

Students have three opportunities to successfully complete a competency or cluster assessment task.

If a student wishes to appeal a decision they must:

1. first obtain a copy of the Student Assessment Appeal form for VET courses
2. then follow the school review and appeals process.

Frequently Asked Questions

1. What must I do to have satisfactorily completed a course?

NESA expects students to have:

- a) Followed the course developed or endorsed by the Board; and
- b) Applied themselves with diligence and sustained effort to the set tasks and experiences provided in the course by the school; and
- c) Achieved some or all of the course outcomes

In simple terms, you must complete all assessment tasks, hand in class work on time and be present at school. If you continually hand in work late, truant, are absent without justification or your behaviour affects your studies or that of others, you will not satisfy the criteria of applying yourself “with diligence and sustained effort”.

2. What do the terms internal and external assessment mean?

Internal assessment refers to assessment tasks designed and conducted by the school.

External assessment refers to the HSC examinations, which are designed and conducted by NESA. In Year 12, internal assessment contributes 50% of your HSC mark and the HSC examination contributes the other 50% of your HSC mark.

3. What do the terms “examination”, “in-class” and “hand-in” assessment task mean?

An “examination” is one that is held in an examination period under examination conditions and draws from most or all content areas, topics or modules of the syllabus. An “in-class assessment task” is one that requires you to be present at school in order to complete, such as topic tests, presentations, performances and submissions of major works. “Hand-in assessment tasks” are those that are completed at home and submitted by a designated due date and time.

4. How do I know when I have an assessment task?

The HSC Assessment Handbook 2023 outlines the weeks in which tasks are due for ALL courses. You will receive an Assessment Task Notification for each task with a specific due date at least 2 weeks before the task is due.

5. What happens if I am not present when an assessment task is issued?

It is your responsibility to obtain the task from your teacher. Extensions will not be granted based on the task not being received.

6. Why do I have to sign the Assessment Task Notification cover sheet when I submit my assessment task?

This is your declaration that the task is all your own work. It is a record showing your submission of the task. You must ensure that you sign it, as you will need that as evidence that you have submitted the task. Without this receipt, you will not have proof of your submission should it be required.

7. What happens if I have a valid reason for being unable to submit an assessment task on time?

You must complete and submit the APPLICATION FOR AN ALTERNATIVE ASSESSMENT TASK form before the task is due to apply for the task to be rescheduled or for an extension of the due date.

8. What happens if I am absent the day a task is due?

Every effort must be made to submit the task on that day. If it is not submitted or attempted in the case of an examination or in-class task, then you must contact the school on the day by phone: 02 9798 8444 or email: canterburb-h.schools@det.nsw.edu.au and apply for Illness/Misadventure. In the case of illness, you must obtain a Medical Certificate completed by the medical practitioner.

9. What happens if I do not submit a task or sit an examination?

You will be awarded zero marks (pending illness/Misadventure decision) for that task and an N-warning letter will be issued as a supportive measure to ensure that you complete the task.

10. What happens if I do not make a serious attempt in an assessment task or examination?

You will be awarded zero marks for the task, an N-warning letter will be issued and you will be required to re-attempt the task.

11. What does “non-serious attempt” mean?

This includes very poor attempts that contain an insufficient amount of work in which to assess a student’s work or the use of derogatory remarks, obscene language and graffiti (e.g. drawing on an examination paper).

12. What happens if my application for the rescheduling of a task or an extension to the due date of a task is rejected?

You will be required to submit the task by the due date.

13. What happens if my application for illness/misadventure is rejected?

If it was submitted late, you will be awarded zero marks. If it has not been attempted, you must attempt the task.

14. Can I appeal the decision of an application for reschedule, extension or illness/misadventure or if I have been found guilty of malpractice?

Yes. You will need to complete the Assessment Appeals Form and provide evidence that the Review Panel will consider.

Misadventure Procedures

The **Application for Alternative Assessment Task/Time** letter should be used when a student cannot meet a deadline for a valid reason such as conflicting school commitments. Any application of an extension of time is required **before** the task due date.

If you know you are going to be absent for any period of time, seek approval from the Deputy Principal first.

If there is a valid reason for the non-completion of a task, an **Application for Illness/ Misadventure for HSC Assessment Task** form needs to be completed. The form and all supporting documentation is to be submitted to the Deputy Principal on the first day back after the absence, otherwise a zero mark will be awarded. The application will go to a panel for a recommendation to be made to the Principal.

An appeal about the panel's decision can be made using the **HSC Assessment Appeal Form**. This form must be given to the Principal within 3 days of being informed of the decision.



APPLICATION FOR ILLNESS AND MISADVENTURE FOR HSC ASSESSMENT TASK

SECTION A PERSONAL DETAILS

Given name: _____ Family name: _____

Parent/Carer Name: _____ Contact Number : _____

SECTION B ASSESSMENT TASK DETAILS

Name of Subject/Course: _____ Teacher: _____

Head Teacher: _____ Original Due Date: _____

Assessment Task Description:

SECTION C DETAIL OF ILLNESS/MISADVENTURE

Explain, in detail, the reason you were unable to submit the assessment task by the due date
OR the reason you believe your performance in the assessment was affected.

Clearly indicate whether you are applying for ILLNESS or MISADVENTURE consideration.

SECTION D SUPPORTING EVIDENCE

Complete either section **D1** or **D2** based on the supporting evidence you are supplying.

D.1: Independent evidence of Illness (e.g. Doctor's Certificate)

Name of Doctor/Health professional supplying the Medical Certificate: _____

Address of Practice: _____

Phone Number of Practice: _____ Date of Consultation : _____

Reason provided by Doctor: _____

Dates student was unavailable for school: _____

NOTE: ATTACH ORIGINAL DOCTOR'S CERTIFICATE

D.2: Evidence of Misadventure (e.g. Family emergency)

Type of misadventure: _____ Date of misadventure event: _____

Type of supporting evidence included:

NOTE: ATTACH SUPPORTING EVIDENCE SIGNED BY PARENT/CARER

SECTION E STUDENT DECLARATION

I declare that I have read the information in the HSC Assessment Information Booklet relating to Illness/Misadventure applications. I declare that the information provided on this form is correct and complete, and that the evidence supporting this application is authentic. I understand that the NESAR Review Panel may discuss this application with me. The panel may ask for further evidence and may investigate the legitimacy of the documentation provided. I understand that submission of incorrect or false information will affect my application for illness/misadventure consideration.

Student name: _____ Student Signature: _____

Parent/Carer Signature: _____ Date: _____

SECTION F HEAD TEACHER RESPONSE

NOTE: ATTACH ASSESSMENT NOTIFICATION, TASK AND OTHER RELEVANT DOCUMENTATION

SECTION G NESAR REVIEW PANEL RECOMMENDATION

NESAR Review Panel Coordinator: _____ Date: _____

SECTION H PRINCIPAL'S DECISION

Principal's Signature: _____ Date: _____



APPLICATION FOR ALTERNATIVE ASSESSMENT TASK/TIME HSC ASSESSMENT TASK

When a student is aware that they are unable to sit or hand in any assessment task due to illness or individual circumstances they must apply on this form for special consideration as outlined in the School Assessment Policy. Failure to comply may result in a zero mark for that assessment task. This form is to be given to the **Head Teacher** of the subject concerned **prior to the deadline of the task**.

SECTION A PERSONAL DETAILS

Given name: _____ Family name: _____
Parent/Carer Name: _____ Contact Number : _____

SECTION B ASSESSMENT TASK DETAILS

Name of Subject/Course: _____ Teacher : _____
Head Teacher: _____ Original Due Date: _____

Assessment Task Description:

Reason for non-attendance or inability to hand in task:

Supporting Documentation:

NOTE: ATTACH SUPPORTING EVIDENCE SIGNED BY PARENT/CARER

SECTION C STUDENT DECLARATION

I declare that I have read the information in the HSC Assessment Information Booklet. I declare that the information provided on this form is correct and complete, and that the evidence supporting this application is authentic. I understand that the NESA Review Panel may discuss this application with me. The panel may ask for further evidence and may investigate the legitimacy of the documentation provided. I understand that submission of incorrect or false information will affect my application for alternative task/time consideration.

Student name: _____ Student signature: _____
Parent/Carer signature: _____ Date: _____

SECTION D HEAD TEACHER RESPONSE

Head Teacher signature: _____ Date Received: _____

SECTION E NESA REVIEW PANEL RECOMMENDATION

NESA Review Panel Coordinator: _____ Date : _____

SECTION F PRINCIPAL'S DECISION

Principal's signature: _____ Date: _____



APPEAL FORM HSC ASSESSMENT TASK

This document must be submitted to the principal within one (1) week of a student receiving his assessment results.

SECTION A PERSONAL DETAILS

Given name: _____ Family name: _____

Parent/Carer Name: _____ Contact Number: _____

SECTION B ASSESSMENT TASK DETAILS

Name of Subject/Course: _____ Teacher : _____

Head Teacher: _____ Original Due Date: _____

Assessment Task Description:

SECTION C BASIS OF APPEAL

Explain in detail the reasons for your appeal:

NOTE: ATTACH SUPPORTING EVIDENCE SIGNED BY PARENT/CARER

SECTION D STUDENT DECLARATION

I declare that I have read the information in the HSC Assessment Information Booklet. I declare that the information provided on this form is correct and complete, and that the evidence supporting this application is authentic. I understand that the NESA Review Panel may discuss this application with me. The panel may ask for further evidence and may investigate the legitimacy of the documentation provided. I understand that submission of incorrect or false information will affect my application.

Student name: _____ Student signature: _____

Parent/Carer signature: _____ Date: _____

SECTION E HEAD TEACHER RESPONSE

Head Teacher signature: _____ Date Received: _____

NOTE: ATTACH SUPPORTING EVIDENCE

SECTION F NESA REVIEW PANEL RECOMMENDATION

NESA Review Panel Coordinator: _____ Date : _____

SECTION G PRINCIPAL'S DECISION

Principal's Signature: _____

Subject Scope and Sequences

The Scope and Sequence for each course is a guide only and is subject to change depending on circumstance.

Ancient History – Scope and Sequence HSC 2024

Term 4 2023

Week	1	2	3	4	5	6	7	8	9	10
Module	Cities of Vesuvius: Pompeii and Herculaneum									
Outcomes	AH12-1, AH12-2, AH12-3, AH12-4, AH12-5, AH12-6, AH12-7, AH12-8, AH12-9, AH12-10									
Tasks									Assessment Task #1	

Term 1 2024

Week	1	2	3	4	5	6	7	8	9	10	11
Module	Ancient Societies: Spartan Society to the Battle of Leuctra 371 BC										
Outcomes	AH12-1, AH12-2, AH12-3, AH12-4, AH12-5, AH12-6, AH12-7, AH12-9										
Tasks									Assessment Task #2		

Term 2 2024

Week	1	2	3	4	5	6	7	8	9	10
Module	Historical Period: The Greek World 500-440 BC									
Outcomes	AH12-1, AH12-2, AH12-3, AH12-4, AH12-5, AH12-6, AH12-7, AH12-8, AH12-9									
Tasks								Assessment Task #3		

Term 3 2024

Week	1	2	3	4	5	6	7	8	9	10
Module	Personalities in their Times: The Near East Xerxes			Trial Exam		Personalities in their Times: The Near East Xerxes			Revision	
Outcomes	AH12-1, AH12-2, AH12-3, AH12-4, AH12-5, AH12-6, AH12-7, AH12-9			AH12-1, AH12-2, AH12-3, AH12-4, AH12-5, AH12-6, AH12-7, AH12-9, AH12-10		AH12-1, AH12-2, AH12-3, AH12-4, AH12-5, AH12-6, AH12-7, AH12-9, AH12-10				
Tasks				Assessment Task #4						

Biology – Scope and Sequence HSC 2024

Term 4 2023

Week	1	2	3	4	5	6	7	8	9	10
Module	Module 7 – Infectious disease- treatment, prevention, control of infectious diseases; the role of the human immune system and its response to infection.									
Outcomes	BIO 11/12-1, BIO 11/12-2, BIO 11/12-3, BIO 11/12-4, BIO 11/12-5, BIO 11/12-6, BIO 11/12-7, BIO 12-14									
Tasks							Assessment Task #1	Assessment Task #1		

Term 1 2024

Week	1	2	3	4	5	6	7	8	9	10	11
Module	Module 5 – Heredity - reproduction and inheritance patterns in plants and animals; role of DNA in polypeptide synthesis										
Outcomes	BIO 11/12-1, BIO 11/12-3, BIO 11/12-4, BIO 11/12-5, BIO 11/12-6, BIO 11/12-7, BIO12-12										
Tasks										Assessment Task #2	

Term 2 2024

Week	1	2	3	4	5	6	7	8	9	10
Module	Module 6 – Genetics- genetic change, including mutations, environmental pressure, uses of biotechnology. Processes of inheritance and evolution.								Module 8 – Non infectious disease	
Outcomes	BIO 11/12-1, BIO 11/12-3, BIO 11/12-4, BIO 11/12-6, BIO 11/12-7, BIO12-13								BIO 12-15	
Tasks						Assessment Task #3				

Term 3 2024

Week	1	2	3	4	5	6	7	8	9	10
Module	Module 8 – Non infectious disease - non-infectious diseases, disorders including their causes and effects on human health			Trial Exam		Module 8 – Non infectious disease			Revision	
Outcomes	BIO 11/12-3, BIO 11/12-4, BIO 11/12-5, BIO 11/12-6, BIO11/12-7, BIO 12-15			BIO 11/12-4, BIO 11/12-5, BIO 11/12-6, BIO11/12-7, BIO 12-12, BIO 12-13, BIO 12-14, BIO 12-15		BIO 11/12-3, BIO 11/12-4, BIO 11/12-5, BIO 11/12-6, BIO11/12-7, BIO 12-15				
Tasks				Assessment Task #4						

Business Studies – Scope and Sequence HSC 2024

Term 4 2023

Week	1	2	3	4	5	6	7	8	9	10
Module	Marketing								Operations	
Outcomes	H1, H2, H4, H5, H9								H1, H4, H7, H8, H9	
Tasks								Assessment Task #1		

Term 1 2024

Week	1	2	3	4	5	6	7	8	9	10	11
Module	Operations								Finance		
Outcomes	H1, H4, H7, H8, H9								H2, H6, H8, H9, H10		
Tasks									Assessment Task #2		

Term 2 2024

Week	1	2	3	4	5	6	7	8	9	10
Module	Finance								Human Resources	
Outcomes	H2, H6, H8, H9, H10								H1, H2, H3, H4, H5, H6, H9	
Tasks								Assessment Task #3		

Term 3 2024

Week	1	2	3	4	5	6	7	8	9	10
Module	Human Resources			Trial Exam		Human Resources			Revision	
Outcomes	H1, H2, H3, H4, H5, H6, H9			H1, H2, H3, H4, H5, H6, H7, H8, H9, H10		H1, H2, H3, H4, H5, H6, H9				
Tasks				Assessment Task #4						

Engineering Studies – Scope and Sequence HSC 2024

Term 4 2023

Week	1	2	3	4	5	6	7	8	9	10
Module	Civil Structure									
Outcomes	H1.1, H2.1, H3.1, H3.2, H3.3, H4.1, H4.3, H5.1, H6.1, H6.2									
Tasks										Assessment Task #1

Term 1 2024

Week	1	2	3	4	5	6	7	8	9	10	11
Module	Personal and Public Transport										
Outcomes	H1.2, H2.1, H3.1, H3.2, H3.3, H4.2, H4.3, H5.1, H6.1, H6.2										
Tasks									Assessment Task #2		

Term 2 2024

Week	1	2	3	4	5	6	7	8	9	10
Module	Aeronautical Engineering									
Outcomes	H1.1, H1.2, H2.2, H3.1, H3.2, H3.3, H4.1, H4.3									
Tasks								Assessment Task #3		

Term 3 2024

Week	1	2	3	4	5	6	7	8	9	10
Module	Telecommunications			Trial Exam		Telecommunications				
Outcomes	H1.1, H1.2, H2.2, H3.2, H4.1, H4.3, H5.2, H6.2			H1.1, H1.2, H2.1, H3.2, H4.2, H5.1, H6.1, H6.2		H1.1, H1.2, H2.2, H3.2, H4.1, H4.3, H5.2, H6.2				
Tasks				Assessment Task #4						

English Advanced – Scope and Sequence HSC 2024

Term 4 2023

Week	1	2	3	4	5	6	7	8	9	10
Module	Common Module: Texts and Human Experiences Selected Poetry by Kenneth Slessor									
Outcomes	EA12-1, EA12-2, EA12-7									
Tasks									Assessment Task #1	Assessment Task #1

Term 1 2024

Week	1	2	3	4	5	6	7	8	9	10	11
Module	Module A: Textual Conversations William Shakespeare "King Richard III" AND Al Pacino 'Looking for Richard'										Module C
Outcomes	EA12-1, EA12-6, EA12-8, EA12-9										
Tasks										Assessment Task #2	

Term 2 2024

Week	1	2	3	4	5	6	7	8	9	10
Module	Module C: The Craft of Writing Noel Pearson 'Eulogy for Gough Whitlam' AND Gwen Harwood 'Father and Child'								Module B	
Outcomes	EA12-1, EA12-4, EA12-5								EA12-1, EA12-2, EA12-3, EA12-4, EA12-6, EA12-9	
Tasks								Assessment Task #3		

Term 3 2024

Week	1	2	3	4	5	6	7	8	9	10
Module	Module B Critical Study of Literature Kazuo Ishiguro "An Artist of the Floating World"			Trial Exam		Module B Critical Study of Literature Kazuo Ishiguro "An Artist of the Floating World"				Revision
Outcomes	EA12-1, EA12-2, EA12-3, EA12-4, EA12-6, EA12-9			EA12-1, EA12-2, EA12-3, EA12-4, EA12-6, EA12-9		EA12-1, EA12-2, EA12-3, EA12-4, EA12-6, EA12-9				
Tasks				Assessment Task #4						

English Standard – Scope and Sequence HSC 2024

Term 4 2023

Week	1	2	3	4	5	6	7	8	9	10
Module	Common Module: Texts and Human Experiences Selected Poetry by Kenneth Slessor									
Outcomes	EN12-1, EN12-2, EN12-7									
Tasks									Assessment Task #1	Assessment Task #1

Term 1 2024

Week	1	2	3	4	5	6	7	8	9	10	11
Module	Module A: Language, Culture and Identity Rob Sitch 'The Castle'										Module C
Outcomes	EN12-1, EN12-6, EN12-8, EN12-9										
Tasks										Assessment Task #2	

Term 2 2024

Week	1	2	3	4	5	6	7	8	9	10
Module	Module C: Craft of Writing Paul Keating 'Funeral Service of the Unknown Australian Soldier' AND Judith Wright 'The Surfer'								Module B	
Outcomes	EN12-1, EN12-4, EN12-5,								EA12-1, EA12-2, EA12-3, EA12-4, EA12-6, EA12-9	
Tasks								Assessment Task #3		

Term 3 2024

Week	1	2	3	4	5	6	7	8	9	10
Module	Module B: Close Study of Literature Mark Haddon 'The Curious Incident of the Dog in the Night-time'			Trial Exam		Module B: Close Study of Literature Mark Haddon 'The Curious Incident of the Dog in the Night-time'				Revision
Outcomes	EN12-1, EN12-2, EN12-3, EN12-4, EN12-6, EN12-9			EN12-1, EN12-2, EN12-3, EN12-4, EN12-6, EN12-9		EN12-1, EN12-2, EN12-3, EN12-4, EN12-6, EN12-9				
Tasks				Assessment Task #4						

Food Technology – Scope and Sequence HSC 2024

Term 4 2023

Week	1	2	3	4	5	6	7	8	9	10
Module	The Australian Food Industry									
Outcomes	H1.2, H1.4, H3.1									
Tasks									Assessment Task #1	

Term 1 2024

Week	1	2	3	4	5	6	7	8	9	10	11
Module	Food Manufacture										
Outcomes	H1.1, H4.2										
Tasks									Assessment Task #2		

Term 2 2024

Week	1	2	3	4	5	6	7	8	9	10
Module	Food Product Development									
Outcomes	H1.3, H4.1									
Tasks									Assessment Task #3	

Term 3 2024

Week	1	2	3	4	5	6	7	8	9	10
Module	Contemporary Nutrition Issues			Trial Exam		Contemporary Nutrition Issues		Revision		
Outcomes	H2.1, H3.2, H5.1			H1.1, H1.2, H1.3, H1.4, H2.1, H3.1, H3.2, H5.1		H2.1, H3.2, H5.1				
Tasks				Assessment Task #4						

Information Processes and Technology (IPT) – Scope and Sequence HSC 2024

Term 4 2023

Week	1	2	3	4	5	6	7	8	9	10
Module	Communication Systems							Project Management		
Outcomes	H1.1, H1.2, H2.1, H3.1, H4.1, H5.1							H2.2, H5.1, H6.1, H6.2		
Tasks										

Term 1 2024

Week	1	2	3	4	5	6	7	8	9	10	11
Module	Project Management					Information Systems and Databases					
Outcomes	H2.2, H5.1, H6.1, H6.2					H2.2, H5.1, H6.1, H6.2					
Ass't Tasks				Assessment Task #1							

Term 2 2024

Week	1	2	3	4	5	6	7	8	9	10
Module	Transaction Processing Systems							Multimedia Systems		
Outcomes	H1.1, H1.2, H2.1, H2.2							H1.1, H1.2, H2.1, H2.2		
Tasks				Assessment Task #2						

Term 3 2024

Week	1	2	3	4	5	6	7	8	9	10
Module	Multimedia Systems			Trial Exam		Revision				
Outcomes	H1.1, H1.2, H2.1, H2.2			H1.1, H1.2, H2.1, H2.2, H3.1, H3.2, H4.1, H5.1, H5.2, H6.1, H6.2, H7.1, H7.2						
Tasks	Assessment Task #3			Assessment Task #4						

Mathematics Advanced – Scope and Sequence HSC 2024

Term 4 2023

Week	1	2	3	4	5	6	7	8	9	10
Module	Functions Graphing Techniques F2			Calculus C2.1, C2.2			Calculus C3.1, C3.2			
Outcomes	MA12-1, MA12-9, MA12-10			MA12-3, MA12-6, MA12-9, MA12-10						
Tasks									Assessment Task #1	

Term 1 2024

Week	1	2	3	4	5	6	7	8	9	10	11
Module	Trigonometric Functions and Graphs T3				Statistical Analysis S3.1		Statistical Analysis S3.2		Calculus C4.1		
Outcomes	MA12-1, MA12-5, MA12-9, MA12-10				MA12-8, MA12-9, MA12-10				MA12-3, MA12-7, MA12-9, MA12-10		
Tasks									Assessment Task #2		

Term 2 2024

Week	1	2	3	4	5	6	7	8	9	10
Module	Calculus C4.2					Statistical Analysis S2.1		Statistical Analysis S2.2		
Outcomes	MA12-3, MA12-7, MA12-9, MA12-10					MA12-8, MA12-9, MA12-10				
Tasks									Assessment Task #3	

Term 3 2024

Week	1	2	3	4	5	6	7	8	9	10
Module	Financial Mathematics M1.2, M1.3			Trial Exam		Financial Mathematics M1.1, M1.4				
Outcomes	MA12-2, MA12-4, MA12-9, MA12-10			MA12-1, MA12-2, MA12-3, MA12-4, MA12-5, MA12-6, MA12-7, MA12-8, MA12-9, MA12-10			MA12-2, MA12-4, MA12-9, MA12-10			
Tasks				Assessment Task #4						

Mathematics Standard 2 – Scope and Sequence HSC 2024

Term 4 2023

Week	1	2	3	4	5	6	7	8	9	10
Module	Simultaneous Linear Relationships A4.1			Non-Right-Angled Trigonometry M6			Ratios and Rates M7			Revision
Outcomes	MS2-12-1, MS2-12-6, MS2-12-9, MS2-12-10			MS2-12-3, MS2-12-4, MS2-12-9, MS2-12-10			MS2-12-3, MS2-12-4, MS2-12-9, MS2-12-10			
Tasks									Assessment Task #1	

Term 1 2024

Week	1	2	3	4	5	6	7	8	9	10	11
Module	Networks N2				Investments and Loans F4				Bivariate Data Analysis S4		
Outcomes	MS2-12-8, MS2-12-9, MS2-12-10				MS2-12-5, MS2-12-9, MS2-12-10				MS2-12-2, MS2-12-7, MS2-12-9, MS2-12-10		
Tasks									Assessment Task #2		

Term 2 2024

Week	1	2	3	4	5	6	7	8	9	10
Module	Annuities F5			Non-Linear Relationships A4.2				Normal Distribution S5		
Outcomes	MS2-12-5, MS2-12-9 MS2-12-10			MS2-12-1, MS2-12-6, MS2-12-9, MS2-12-10				MS2-12-2, MS2-12-7, MS2-12-9, MS2-12-10		
Tasks									Assessment Task #3	

Term 3 2024

Week	1	2	3	4	5	6	7	8	9	10
Module	Critical Path Analysis N3			Trial Exam		Revision				
Outcomes	MS2-12-8, MS2-12-9, MS2-12-10			Entire course including Year 11						
Tasks				Assessment Task #4						

Mathematics Standard 1 – Scope and Sequence HSC

Term 4 2023

Week	1	2	3	4	5	6	7	8	9	10
Module	Types of Relationships A3.1			Right-Angled Trigonometry M3						Revision
Outcomes	MS1-12-1, MS1-12-6, MS1-12-9, MS1-12-10			MS1-12-3, M12-12-4, MS1-12-9, MS1-12-10						
Tasks									Assessment Task #1	

Term 1 2024

Week	1	2	3	4	5	6	7	8	9	10	11
Module	Networks and Paths N1.1			Networks and Paths N1.2			Scale Drawings M5		Types of Relationships A3.2		
Outcomes	MS1-12-8, MS1-12-9, MS1-12-10			MS1-12-8, MS1-12-9, MS1-12-10			MS1-12-3, MS1-12-4, MS1-12-9, MS1-12-10		MS1-12-1, MS1-12-6, MS1-12-9, MS1-12-10		
Tasks									Assessment Task #2		

Term 2 2024

Week	1	2	3	4	5	6	7	8	9	10
Module	Investments F2			Depreciation and Loans F3				Statistical Analysis S3.1		
Outcomes	MS1-12-5, MS1-12-9, MS1-12-10			MS1-12-5, MS1-12-9, MS1-12-10				MS1-12-2, MS1-12-7, MS1-12-9, MS1-12-10		
Tasks									Assessment Task #3	

Term 3 2024

Week	1	2	3	4	5	6	7	8	9	10
Module	Statistical Analysis S3.2		Revision	Trial Exam		Statistical Analysis S3.2 cont.	Rates M4			Revision
Outcomes	MS1-12-2, MS1-12-7, MS1-12-9, MS1-12-10			Entire course including Year 11			MS1-12-3, MS1-12-9, MS1-12-10			
Tasks				Assessment Task #4						

Mathematics Extension 1 – Scope and Sequence HSC

Term 4 2023

Week	1	2	3	4	5	6	7	8	9	10
Module	Vectors V1.1			Further Operations with Vectors V1.2				Proof by Mathematical Induction P1		
Outcomes	ME12-2, ME12-6, ME12-7							ME12-1, ME12-6, ME12-7		
Tasks									Assessment Task #1	

Term 1 2024

Week	1	2	3	4	5	6	7	8	9	10	11
Module	Binomial Distributions S1.1				Normal Approximation S1.2			Trigonometric Equations T3			
Outcomes	ME12-5, ME12-6, ME12-7							ME12-3, ME12-6, ME12-7			
Tasks									Assessment Task #2		

Term 2 2024

Week	1	2	3	4	5	6	7	8	9	10
Module	Further Calculus Skills C2					Solids of Revolution C3.1				
Outcomes	ME12-1, ME12-4, ME12-6, ME12-7									
Tasks									Assessment Task #3	

Term 3 2024

Week	1	2	3	4	5	6	7	8	9	10
Module	Differential Equations C3.2		Revision	Trial Exam		Differential Equations C3.2		Projectile Motion V1.3		Revision
Outcomes	ME12-1, ME12-4, ME12-6, ME12-7			Entire course including Year 11		ME12-1, ME12-4, ME12-6, ME12-7		ME12-2, ME12.6, ME12-7		
Tasks				Assessment Task #4						

Modern History – Scope and Sequence HSC

Term 4 2023

Week	1	2	3	4	5	6	7	8	9	10
Module	Power and Authority in the Modern World									
Outcomes	MH12-1, MH12-2, MH12-3, MH12-5, MH12-6, MH12-8, MH12-9									
Tasks								Assessment Task #1		

Term 1 2024

Week	1	2	3	4	5	6	7	8	9	10	11
Module	National Study: Russia and the Soviet Union										
Outcomes	MH12-1, MH12-2, MH12-3, MH12-4, MH12-5, MH12-6, MH12-7, MH12-9										
Tasks									Assessment Task #2		

Term 2 2024

Week	1	2	3	4	5	6	7	8	9	10
Module	Peace and Conflict: Arab-Israeli Conflict 1948-1996									
Outcomes	MH12-1, MH12-2, MH12-3, MH12-4, MH12-6, MH12-7, MH12-8, MH12-9									
Tasks							Assessment Task #3			

Term 3 2024

Week	1	2	3	4	5	6	7	8	9	10
Module	Change in the Modern World: Apartheid in South Africa 1960-1994			Trial Exam		Change in the Modern World: Apartheid in South Africa 1960-1994			Revision	
Outcomes	MH12-1, MH12-2, MH12-3, MH12-4, MH12-5, MH12-6, MH12-7, MH12-9			AH12-1, AH12-2, AH12-3, AH12-4, AH12-5, AH12-6, AH12-7, AH12-9, AH12-10		MH12-1, MH12-2, MH12-3, MH12-4, MH12-5, MH12-6, MH12-7, MH12-9				
Tasks				Assessment Task #4						

Music– Scope and Sequence HSC 2024

Term 4 2023

Week	1	2	3	4	5	6	7	8	9	10
Module	An instrument and it's repertoire									
Outcomes	H1, H2, H3, H4, H5, H6, H7, H8, H9, H10, H11									
Tasks								Assessment Task #1		

Term 1 2024

Week	1	2	3	4	5	6	7	8	9	10	11
Module	Music for small ensembles										
Outcomes	H1, H3, H7, H9, H10, H11										
Tasks									Assessment Task #2		

Term 2 2024

Week	1	2	3	4	5	6	7	8	9	10
Module	Students' choice									
Outcomes	H1, H2, H3, H4, H5, H6, H7, H8, H9, H10, H11									
Tasks							Assessment Task #3			

Term 3 2024

Week	1	2	3	4	5	6	7	8	9	10
Module	HSC Preparation			Trial Exam		HSC Preparation				
Outcomes	H1, H2, H3, H4, H5, H6, H7, H8			H1, H2, H3, H4, H5, H6, H7, H8		H1, H2, H3, H4, H5, H6, H7, H8				
Tasks				Assessment Task #4						

PDHPE – Scope and Sequence HSC 2024

Term 4 2023

Week	1	2	3	4	5	6	7	8	9	10
Module	Sports Medicine							Core 2: Factors affecting performance		
Outcomes	H1, H2, H4, H5, H9							H7, H8, H9, H10, H11, H16, H17		
Tasks									Assessment Task #1	

Term 1 2024

Week	1	2	3	4	5	6	7	8	9	10	11
Module	Core 2: Factors affecting performance								Core 1: Health priorities in Australia		
Outcomes	H7, H8, H9, H10, H11, H16, H17								H1, H2, H3, H4, H5, H6, H14, H15, H16		
Tasks									Assessment Task #2		

Term 2 2024

Week	1	2	3	4	5	6	7	8	9	10
Module	Core 1: Health priorities in Australia							Improving Performance		
Outcomes	H2, H6, H8, H9, H10							H7, H8, H9, H10, H16		
Tasks									Assessment Task #3	

Term 3 2024

Week	1	2	3	4	5	6	7	8	9	10
Module	Improving Performance			Trial Exam		Revision				
Outcomes	H7, H8, H9, H10, H16			H1, H2, H3, H4, H5, H6, H7, H8, H9, H10						
Tasks				Assessment Task #4						

Physics – Scope and Sequence HSC 2024

Term 4 2023

Week	1	2	3	4	5	6	7	8	9	10
Module	Module 5 – Advanced Mechanics						Module 6 - Electromagnetism		Module 8 – From the Universe to the Atom	
Outcomes	PH11/12-4, PH11/12-5, PH11/12-6, PH11/12-7, PH12-12						PH11/12-1, PH11/12-2, PH11/12-3, PH11/12-4, PH11/12-5, PH12-13		PH11/12-1, PH11/12-5, PH11/12-6, PH11/12-7, PH12-15	
Tasks							Assessment Task #1			

Term 1 2024

Week	1	2	3	4	5	6	7	8	9	10	11
Module	Module 6 - Electromagnetism								Module 7 – The Nature of Light		
Outcomes	PH11/12-1, PH11/12-2, PH11/12-3, PH11/12-4, PH11/12-5, PH12-13								PH11/12-1, PH11/12-2, PH11/12-3, PH11/12-4, PH11/12-7, PH12-14		
Tasks						Assessment Task #2					

Term 2 2024

Week	1	2	3	4	5	6	7	8	9	10
Module	Module 7 – The Nature of Light				Module 8 – From the Universe to the Atom		Module 7	Module 8 – From the Universe to the Atom		
Outcomes	PH11/12-1, PH11/12-2, PH11/12-3, PH11/12-4, PH11/12-7, PH12-14				PH11/12-1, PH11/12-5, PH11/12-6, PH11/12-7, PH12-15			PH11/12-1, PH11/12-5, PH11/12-6, PH11/12-7, PH12-15		
Tasks			Assessment Task #3							

Term 3 2024

Week	1	2	3	4	5	6	7	8	9	10
Module	Module 8 – From the Universe to the Atom			Trial Exam		Revision				
Outcomes	PH11/12-1, PH11/12-5, PH11/12-6, PH11/12-7, PH12-15			PH11/12-4, PH11/12-5, PH11/12-6, PH11/12-7, PH12-12, PH12-13, PH12-14, PH12-15						
Tasks				Assessment Task #4						

SLR – Scope and Sequence HSC 2024

Term 4 2023

Week	1	2	3	4	5	6	7	8	9	10
Module	Sports Coaching and Training									
Outcomes	1.1, 1.3, 2.1, 2.2, 3.1, 3.2, 4.2, 4.5									
Tasks									Assessment Task #2	

Term 1 2024

Week	1	2	3	4	5	6	7	8	9	10	11
Module	Individual Games and Sports Application										
Outcomes	1.1, 1.3, 2.1, 3.1, 3.2, 4.1, 4.4								Athletics (individual games)		
Tasks									Assessment Task #3		

Term 2 2024

Week	1	2	3	4	5	6	7	8	9	10
Module	Practical Sports Skills / Knowledge assessment									
Outcomes	1.1, 1.3, 2.3, 4.1, 4.2, 4.4									
Module	Fitness									
Outcomes	1.1, 1.3, 2.3, 4.1, 4.2, 4.4									
Tasks										

Term 3 2024

Week	1	2	3	4	5	6	7	8	9	10
Module	Practical Sports Skills / Knowledge assessment									
Outcomes	1.1, 1.3, 2.3, 4.1, 4.2, 4.4									
Module	Fitness									
Outcomes	1.1, 1.3, 2.3, 4.1, 4.2, 4.4									
Tasks		Assessment Task #4							Assessment Task #1 Ongoing practical component	

Visual Arts– Scope and Sequence HSC 2024

Term 4 2023

Week	1	2	3	4	5	6	7	8	9	10
Module	Visual Diary - Development of BOW Art Criticism / History, Technology / New Media in Art, The Environment in Art									
Outcomes	H1, H4, H5, H7, H9, H10									
Tasks									Assessment Task #1 AM and AC	

Term 1 2024

Week	1	2	3	4	5	6	7	8	9	10	11
Module	Development of BOW Art Criticism and Art History, Written Response, Conceptual Framework Key Works of the 20th and 21st Centuries (including case studies)										
Outcomes	H1, H4, H5, H7, H8, H9, H10										
Tasks											Assessment Task #2 AC

Term 2 2024

Week	1	2	3	4	5	6	7	8	9	10
Module	Artmaking - Development of the Body of Work, Artmaking Practice, Conceptual Framework Completion of Final Case Studies									
Outcomes	H2, H3, H4, H5, H7, H8, H9, H10									
Tasks										

Term 3 2024

Week	1	2	3	4	5	6	7	8	9	10
Module	BOW Under Refinement, Written Documentation of Conceptual Framework, Relationships and Viewpoints, Includes Written Statement of BOW					Completion of BOW	Revision - Art Criticism, Written Response, Case Studies			
Outcomes	H1, H2, H3, H4, H5, H6			H7, H8, H9, H10		H1, H2, H3, H4, H5, H6				
Tasks	Assessment Task #3			Assessment Task #4						

Subject Assessment Schedules

Ancient History

Units: 2

HSC 2024

Components (as per syllabus)	HSC Weighting %	Task 1 Term 4, Week 9 2023	Task 2 Term 1, Week 9 2024	Task 3 Term 3, Week 8 2024	Task 4 Term 3, Weeks 4-5 2024
		Core study Cities of Vesuvius Research and source analysis	Ancient Societies Sparta Historical source analysis	Historical Periods Greek Worlds 500-440 BC Historical skills analysis	Trial HSC Examination Examination
Knowledge and understanding of content	40	10	10	10	10
Source based skills	20		10		10
Historical inquiry and research	20	15		5	
Communication of historical understanding in appropriate forms	20		5	5	10
TOTAL	100	25	25	20	30
Outcomes Assessed		AH12-2, AH12-3, AH12-4, AH12-5, AH12-6, AH12-7, AH12-8, AH12-9, AH12-10	AH12-1, AH12-3, AH12-4, AH12-5, AH12-6, AH12-7, AH12-9	AH12-1, AH12-3, AH12-4, AH12-5, AH12-6, AH12-7, AH12-8, AH12-9	AH12-1, AH12-2, AH12-3, AH12-4, AH12-5, AH12-6, AH12-7, AH12-9, AH12-10

Biology

Units: 2

HSC 2024

Components (as per syllabus)	HSC Weighting %	Task 1 Term 4, Week 8 2023	Task 2 Term 1, Week 10 2024	Task 3 Term 2, Week 6 2024	Task 4 Term 3, Weeks 4-5 2024
		Practical Investigation Module 7	Model Module 5	Depth Study Module 6	Trial HSC Examination Modules 5, 6, 7 and 8
Skills in working scientifically	60	20	15	15	10
Knowledge and understanding of course content	40	5	5	10	20
TOTALS	100	25	20	25	30
Outcomes Assessed		BIO 11/12-1 BIO 11/12-2 BIO 11/12-3 BIO 11/12-4 BIO12-14	BIO 11/12-3 BIO 11/12-4 BIO 11/12-5 BIO 11/12-6 BIO 11/12-7 BIO 12-12	BIO 11/12-3 BIO 11/12-4 BIO 11/12-5 BIO 11/12-6 BIO 11/12-7 BIO 12-13	BIO11/12-1, BIO11/12-2, BIO11/12-3, BIO11/12-4, BIO11/12-5, BIO11/12-6, BIO11/12-7, BIO12-12, BIO12-13, BIO12-14 BIO12-15

Business Studies

Units: 2

HSC 2024

Components (as per syllabus)	HSC Weighting %	Task 1 Term 4, Week 8 2023	Task 2 Term 1, Week 8 2024	Task 3 Term 2, Week 8 2024	Task 4 Term 3, Weeks 4-5 2024
		Stimulus Marketing Report Marketing	Research Report- In Class Response Operations	Short answer/skills analysis Financial Management	Trial HSC Examination
Knowledge and understanding of course content	40	10	5	10	15
Stimulus based skills	20		5	10	5
Inquiry and research	20	15			5
Communication of business information, ideas and issues in appropriate forms	20		10	5	5
TOTALS	100	25	20	25	30
Outcomes Assessed		H1,2,4,5,9	H1,4,7,8,9	H 2,6,8,9,10	H1,2,3,4,5,6,7,8,9,10

Engineering Studies

Units: 2

HSC 2024

Components (as per syllabus)	HSC Weighting %	Task 1 Term 4, Week 10 2023	Task 2 Term 1, Week 8 2024	Task 3 Term 2, Week 8 2024	Task 4 Term 3, Weeks 4-5 2024
		Civil Structures Truss Analysis and Report (group task)	Personal and Public Transport Materials	Aeronautical Engineering Materials Research	Trial HSC Examination
Knowledge and understanding of course content	60	20	10	20	15
Knowledge and skills in research, problem solving and communication related to engineering practice	40	5	10	5	15
TOTALS	100	25	20	25	30
Outcomes Assessed		H1.2, H3.1, H3.2, H3.3, H5.1, 6.1, H6.2	H1.2, H2.1, H3.1, H3.2, H3.3, H4.1, H4.2, H4.3, H5.1, H6.1, and H6.2	H1.1, H1.2, H2.2, H3.1, H3.2, H3.3, H4.1, H4.3, H 6.1, H5.2	H1.1, H1.2, H2.1, H3.2, H4.2, H5.1, H6.1, H6.2

English Advanced

Units: 2

HSC 2024

Components (as per syllabus)	HSC Weighting %	Task 1 Term 4, Weeks 9 & 10 2023	Task 2 Term 1, Week 9 2024	Task 3 Term 2, Week 8 2024	Task 4 Term 3, Weeks 4-5 2024
		Multimodal Presentation Texts and Human Experiences	Essay Module A: Textual Conversations	In Class Creative Response Module C: Craft of Writing	Trial HSC Examination All Modules
Knowledge and understanding of course content	50	15	15	10	10
Skills in responding to texts and communication of ideas appropriate to audience, purpose and context across all modes	50	10	10	15	15
TOTALS	100	25	25	25	25
Outcomes Assessed		EA12-1, EA12-2, EA12-7	EA12-1, EA12-4, EA12- 5,	EA12-1, EA12-6, EA12- 8, EA12-9	EA12-1, EA12-2, EA12- 3, EA12-4, EA12-6, EA12-9

English Standard

Units: 2

HSC 2024

Components (as per syllabus)	HSC Weighting %	Task 1 Term 4, Weeks 9 & 10 2023	Task 2 Term 1, Week 10 2024	Task 3 Term 2, Week 8 2024	Task 4 Term 3, Weeks 4-5 2024
		Multimodal Presentation Texts and Human Experiences	Essay Module A: Language, Culture and Identity	In Class Creative Response Module C: Craft of Writing	Trial HSC Examination All Modules
Knowledge and understanding of course content	50	15	15	10	10
Skills in responding to texts and communication of ideas appropriate to audience, purpose and context across all modes	50	10	10	15	15
TOTALS	100	25	25	25	25
Outcomes Assessed		EN12-1, EN12-2, EN12-7	EN12-1, EN12-6, EN12-8, EN12-9	EN12-1, EN12-4, EN12-5,	EN12-1, EN12-2, EN12-3, EN12-4, EN12-6, EN12-9

Food Technology

Units: 2

HSC 2024

Components (as per syllabus)	HSC Weighting %	Task 1 Term 4, Week 9 2023	Task 2 Term 1, Week 9 2024	Task 3 Term 2, Week 9 2024	Task 4 Term 3, Weeks 4-5 2024
		Australian Food Industry Report and Practical Task	Food Manufacturing Case Study and Practical Task	Food Product Development Research and Practical Task	Trial HSC Examination
Knowledge and understanding of course content	40	10		10	20
Knowledge and skills in designing, researching, analysing and evaluating	30	NA	10	10	10
Skills in experimenting with and preparing food by applying theoretical concepts	30	10	10	10	
TOTALS	100	20	20	30	30
Outcomes Assessed		H1.1, H1.2, H1.4, H3.1	H1.1, H4.2, H5.1	H1.3, H2.1, H4.1, H5.1	H1.1, H1.2, H1.3, H1.4, H2.1, H3.1, H3.2, H5.1

Information Processing and Technology

Units: 2

HSC 2024

Components (as per syllabus)	HSC Weighting %	Task 1 Term 1, Week 4 2023	Task 2 Term 2, Week 5 2024	Task 3 Term 3, Week 1 2024	Task 4 Term 3, Weeks 4-5 2024
		Communication System and Project Management Research Questions	Project Management Documentation and Database Product	TPS Case Study Multimedia Product	Trial HSC Examination
Knowledge and understanding of course content	60	20	10	10	20
Knowledge and skills in the design and development of information systems	40		15	15	10
TOTALS	100	20	25	25	30
Outcomes Assessed		H1.1, H1.2, H2.1, H3.1, H4.1, H5.1	H2.2, H5.1, H6.1, H6.2	H1.1, H1.2, H2.1, H2.2	H1.1, H1.2, H2.1, H2.2, H3.1, H3.2, H4.1, H5.1, H5.2, H6.1, H6.2, H7.1, H7.2

Mathematics Advanced

Units: 2

HSC 2024

Components (as per syllabus)	HSC Weighting %	Task 1 Term 4, Week 9 2023	Task 2 Term 1, Week 9 2024	Task 3 Term 2, Week 9 2024	Task 4 Term 3, Weeks 4-5 2024
		Open-book Examination F2, C2, C3 Graphing techniques, Differentiation of logarithmic, exponential, and trigonometric functions, Rules of differentiation, The first and second derivatives, Applications of the derivatives	Investigation Task T3, S3 Trigonometric functions and graphs, Continuous random variables, The normal distribution	In-class Examination C4, S2 The anti-derivative, Area and the definite integral, Data (grouped and ungrouped) and Summary Statistics	Trial HSC Examination Whole course F2, T3, C2, C3, C4, M1, S2, S3
Understanding, Fluency and Communication	50	12.5	10	12.5	15
Problem Solving, Reasoning and Justification	50	12.5	10	12.5	15
TOTALS	100	25	20	25	30
Outcomes Assessed		MA12-1 MA12-3 MA12-6 MA12-9 MA12-10	MA12-1 MA12-5 MA12-8 MA12-9 MA12-10	MA12-3 MA12-7 MA12-8 MA12-9 MA12-10	MA12-1, MA12-2, MA12-3, MA12-4, MA12-5, MA12-6, MA12-7, MA12-8, MA12-9, MA12-10

Mathematics Standard 2

Units: 2

HSC 2024

Components (as per syllabus)	HSC Weighting %	Task 1 Term 4, Week 9 2023	Task 2 Term 1, Week 9 2024	Task 3 Term 2, Week 9 2024	Task 4 Term 3, Weeks 4-5 2024
		Open book Assessment A4.1 Simultaneous Linear Relationships M6 Non-Right-Angled Trigonometry M7 Ratios and Rates	Investigation Assignment MS-N2 Networks and F4 Investments and Loans	In-Class Assessment S4 Bivariate Data Analysis F5 Annuities A4.2 Non-Linear Relationships	Trial HSC Examination Assessing Year 11 and Year 12 Content
Understanding, Fluency and Communication	50	15	5	10	15
Problem Solving, Reasoning and Justification	50	10	15	10	15
TOTAL	100	25	25	20	30
Outcomes Assessed		MS2-12-1 MS2-12-3 MS2-12-4 MS2-12-6 MS2-12-9 MS2-12-10	MS2-12-5 MS2-12-8 MS2-12-9 MS2-12-10	MS2-12-1 MS2-12-2 MS2-12-5 MS2-12-6 MS2-12-7 MS2-12-9 MS2-12-10	All Year 11 outcomes MS2-12-1, MS2-12-2, MS2-12-3, MS2-12-4, MS2-12-5, MS2-12-6, MS2-12-7, MS2-12-8, MS2-12-9, MS2-12-10

Mathematics Standard 1

Units: 2

HSC 2024

Components (as per syllabus)	HSC Weighting %	Task 1 Term 4, Week 9 2023	Task 2 Term 1, Week 9 2024	Task 3 Term 2, Week 9 2024	Task 4 Term 3, Weeks 4-5 2024
		Open book Assessment MSA-3 Types of Relationships and MS-M3 Right-angled triangles	Investigation Assignment MS-N1 Networks and Paths (N1.1): Networks and Shortest paths	In-Class Assessment MSA-3.2: Graphs of practical situations, MS-M5 Scale Drawings, MS-F2 Investment and MS-F3 Depreciation and Loans	Trial HSC Assessing Year 11 and Year 12 Content except MS-M4 Rates
Understanding, Fluency and Communication	50	10	15	10	15
Problem Solving, Reasoning and Justification	50	15	10	10	15
TOTAL	100	25	25	20	30
Outcomes Assessed		MS1-12-1, MS1-12-3, MS1-12-4, MS1-12-6, MS1-12-9, MS1-12-10	MS1-12-8, MS1-12-9, MS1-12-10	MS1-12-1, MS1-12-3, MS1-12-4, MS1-12-5, MS1-12-6, MS1-12-9, MS1-12-10	All Year 11 outcomes MS1-12-1, MS1-12-2, MS1-12-3, MS1-12-4, MS1-12-5, MS1-12-6, MS1-12-7, MS1-12-8, MS1-12-9, MS1-12-10

Mathematics Extension

Units: 1

HSC 2024

Components (as per syllabus)	HSC Weighting %	Task 1 Term 4, Week 9 2023	Task 2 Term 1, Week 9 2024	Task 3 Term 2, Week 9 2024	Task 4 Term 3, Weeks 4-5 2024
		Open book Assessment ME-V1.1 Vectors and ME-V1.2 Further Operations with Vectors	In-Class Assessment ME-S1.1 Binomial Distributions and ME-S1.2 Normal Approximation	Investigation Assignment ME-C2 Further Calculus Skills And ME-C3.1 Solids of Revolution	Trial HSC Examination Whole Course
Understanding, Fluency and Communication	50	10	15	10	15
Problem Solving, Reasoning and Justification	50	15	10	10	15
TOTAL	100	25	25	20	30
Outcomes Assessed		ME12-2 ME12-6 ME12-7	ME12-5 ME12-6 ME12-7	ME12-1 ME12-4 ME12-6 ME12-7	ME12-1 ME12-2 ME12-3 ME12-4 ME12-5 ME12-6 ME12-7

Modern History

Units: 2

HSC 2024

Components (as per syllabus)	HSC Weighting %	Task 1 Term 4, Week 8 2023	Task 2 Term 1, Week 9 2024	Task 3 Term 2, Week 7 2024	Task 4 Term 3, Week 4-5 2024
		Research and Extended Response Core Study: Power and Authority in the Modern World 1919- 1946	Historical Analysis National Study: Russia and the Soviet Union 1917-1941	Multi-modal Presentation Peace and Conflict: The Arab-Israeli Conflict 1948-1996	Trial HSC Examination Core Study National Study Peace and Conflict Change in the Modern World: Apartheid in South Africa 1960-1994
Knowledge and understanding of course content	40	10	10	10	10
Historical skills in the analysis and evaluation of sources and interpretations	20		10		10
Historical inquiry and research	20	15		5	
Communication of historical understanding in appropriate forms	20		5	5	10
TOTAL	100	25	25	20	30
Outcomes Assessed		MH12-1, MH12-2, MH12-3, MH12-5, MH12-6, MH12-8, MH12-9	MH12-1, MH12-3, MH12-4, MH12-5, MH12-6, MH12-7, MH12-9	MH12-1, MH12-2, MH12-3, MH12-4, MH12-6, MH12-7, MH12-8, MH12-9, MH12-9	MH12-1, MH12-2, MH12-3, MH12-4, MH12-5, MH12- 6, MH12-7, MH12-9

Music

Units: 2

HSC 2024

Components (as per syllabus)	HSC Weighting %	Task 1 Term 4, Week 9 2023	Task 2 Term 1, Week 9 2024	Task 3 Term 2, Week 6 2024	Task 4 Term 3, Week 4-5 2024
		Core Musicology viva voce Elective (Perf/Comp/Mus)	Core Performance Elective (Perf/Comp/Mus)	Core Composition Portfolio Elective (Perf/Comp/Mus)	Trial HSC Examination formal written, aural examination, presentation of 3 electives
Musicology	10	10			
Performance	10		10		
Composition	10			10	
Aural Skills	25				25
Electives	45	10	10	10	15
TOTAL	100	20	20	20	30
Outcomes Assessed		H4, H5, H6, H7, H11	H1, H3, H7, H9, H10, H11	H3, H4, H5, H6, H7, H8, H10	H1, H2, H3, H4, H5, H6, H7, H8

Personal Development Health and Physical Education

Units: 2

HSC 2024

Components (as per syllabus)	HSC Weighting %	Task 1 Term 4, Week 9 2023	Task 2 Term 1, Week 9 2024	Task 3 Term 2, Week 9 2024	Task 4 Term 3, Weeks 4-5 2024
		Interactive ICT Task Option 1 - Sport Medicine	Research and Written Task Core Topic 2 - Factors Affecting Performance	Source Analysis Core Topic 1 - Health Priorities in Australia	Trial HSC Examination Core Topic 1 & 2 Option 1 & 2
Knowledge and understanding of course content	40	10	10	10	10
Skills in critical thinking, research, analysis and communicating	60	15	15	10	20
TOTALS	100	25	25	20	30
Outcomes Assessed		H8, H13, H16, H17	H7, H8, H9, H10, H11, H16, H17	H1, H2, H3, H4, H5, H14, H15, H16	H1, H2, H3, H4, H5, H6, H7, H8, H9, H10, H11, H12, H13, H14, H15, H16, H17

Physics

Units: 2

HSC 2024

Components (as per syllabus)	HSC Weighting %	Task 1 Term 4, Week 7 2023	Task 2 Term 1, Week 6 2024	Task 3 Term 2, Week 3 2024	Task 4 Term 3, Weeks 4-5 2024
		Take home Assessment Projectile, Rotational and Gravitational Dynamics	Depth Study Measure the Efficiency of a Transformer	Practical Examination Diffraction and Interference	Trial HSC Examination
Skills in Working Scientifically	60	9	21	15	15
Knowledge and understanding	40	6	14	10	10
TOTALS	100	15	35	25	25
Outcomes Assessed		PH11/12-6 PH11/12-7 PH12-12	PH11/12-1 PH11/12-2 PH11/12-3 PH11/12-4 PH11/12-5 PH11/12-6 PH11/12-7 PH12-13 PH12-14	PH11/12-3 PH11/12-4 PH11/12-5 PH11/12-6 PH11/12-7 PH12-14	PH11/12-4 PH11/12-5 PH11/12-6 PH11/12-7 PH12-12 PH12-13 PH12-14 PH12-15

Sport, Lifestyle and Recreation

Units: 2 (Non ATAR)

HSC 2024

Components (as per syllabus)	HSC Weighting %	Task 1 Ongoing, Term 4, 2023 to Term 3, 2024	Task 2 Term 1, Weeks 9-10 2024	Task 3 Term 1, Weeks 8-10 2024	Task 4 Term 3, Week 2 2024
		Skills/Knowledge assessment Practical Sports	Coaching session implementation & written task Topic – Sports Coaching & Training	Skill development program implementation & written task Topic - Individual Games and Sports Applications	Fitness training session presentation & written task Topic - Fitness
Knowledge and understanding	50	10	10	15	15
Skills	50	30	10	5	5
TOTALS	100	40	20	20	20
Outcomes Assessed		1.1, 1.3, 2.3, 4.1, 4.2, 4.4	1.1, 1.3, 2.1, 2.2, 3.1, 3.2, 4.2, 4.5	1.1, 1.3, 2.1, 3.1, 3.2, 4.1, 4.4	1.2, 1.3, 2.2, 3.2, 3.3, 4.1

Visual Arts

Units: 2

HSC 2024

Components (as per syllabus)	HSC Weighting %	Task 1 Term 4, Week 9-10 2023		Task 2 Term 1, Week 11 2024	Task 3 Term 3, Week 1 2024	Task 4 Term 3, Weeks 4-5 2024	
		Artmaking: Development of the Body of Work: VAPD documenting initial artmaking experimentation and investigation, analysis of artmaking practice through the frames, research and comparative analysis of student practice and selected artists' practice	Art Criticism and Art History: Written response; Explanation of how the frames provide for different orientations to critical and historical investigations of art.	Art Criticism and Art History: Written response; Explanation of the roles and relationships between the agencies in the conceptual framework through artists and artworks	Artmaking: Development of the Body of Work Submission of artworks under development, VAPD including a written account of artmaking practice through the artwork/audience relationship.	HSC Trial Examination Art Criticism and Art History Written Examination	Resolving the Body of Work Artworks undergoing refinement, VAPD including curation of works for HSC submission with written artist statement.
Artmaking	50	15			15	20	
Art Criticism and Art History	50	15		15		20	
TOTALS	100	30		15	15	40	
Outcomes Assessed		H1, H4, H5, H7, H9, H10		H7, H8, H9, H10	H1, H2, H3, H4, H5, H6	H1, H2, H3, H4, H5, H6	

Assessment Schedule Planner 2023/24

Enter the details of your assessment tasks for 2022/23 on this calendar and use it for planning purposes.

	Week	Monday	Tuesday	Wednesday	Thursday	Friday
Term 4 2023	1					
	2					
	3					
	4					
	5					
	6					
	7					
	8					
	9					
	10					
Term 1 2024	1					
	2					
	3					
	4					
	5					
	6					
	7					
	8					
	9					
	10					
	11					
Term 2 2024	1					
	2					
	3					
	4					
	5					
	6					
	7					
	8					
	9					
	10					
Term 3 2024	1					
	2					
	3					
	4	HSC TRIAL EXAMS				
	5	HSC TRIAL EXAMS				
	6					
	7					
	8					
	9					
	10					

